

EDIROL M-16DX 2.0 update information

Functionality added by the M-16DX 2.0 update

The following functionality has been added.

- DAW controller function
- The number of scenes has increased from eight to sixteen
- Scene Edit function

Contents

DAW controller function	2
Selecting the DAW controller mode	2
Switching to DAW controller mode.....	3
How the M-16DX modes work in each DAW	4
ALTERNATIVE mode (SONAR/SONAR 6 LE).....	4
ALTERNATIVE mode (SONAR 6.0 or earlier/SONAR LE).....	6
ALTERNATIVE mode (Logic/Live).....	8
EXCLUSIVE mode (SONAR/SONAR 6 LE)	11
EXCLUSIVE mode (Logic)	13
Importing the preset file for controlling SONAR	15
Settings for using Logic with EXCLUSIVE mode	18
Scene Edit function	20
Enabling scene editing	20
Editing the settings of a scene.....	20
Appendix (Template sheet).....	21

* All product names mentioned in this document are trademarks or registered trademarks of their respective owners.

Copyright © 2007 ROLAND CORPORATION

All rights reserved. No part of this publication may be reproduced in any form without the written permission of ROLAND CORPORATION.

DAW controller function

You can connect the M-16DX to your PC and use it to control DAW software.

Selecting the DAW controller mode

1

Simultaneously press the **CURSOR [BWD]** and **[FWD]** buttons.

The Utility screen will appear.

2

Use the **CURSOR [FWD]** button to choose “DAW Select.”

3

Use the **VALUE [-]/[+]** buttons to select the DAW software you’re using.

Choose “SONAR” if you’re using SONAR, or choose “GENERAL” if you’re using Logic/Live.



4

Use the **CURSOR [BWD]** button to select “DAW Controller.”

With the factory settings, this will be “OFF.”

5

Use the **VALUE [+]/[-]** buttons to choose “ALT” (ALTERNATIVE mode) or “EXC” (EXCLUSIVE mode).

Now you can control the parameters of your DAW software from the M-16DX.



ALTERNATIVE mode

This setting is best when you want to operate the mixer and your DAW software simultaneously. To use ALTERNATIVE mode, choose the **ALT** setting.

EXCLUSIVE mode

This setting is suitable for mastering after you’ve finished recording. You can use this with SONAR and in Logic. In this mode, you’re limited to controlling either the mixer or your DAW software, but you’ll be able to use all of the M-16DX’s knobs to control large numbers of parameters simultaneously. To use EXCLUSIVE mode, choose **EXC**.

* For details on operation in each mode, refer to “How the M-16DX modes work in each DAW” (p. 4).

Switching to DAW controller mode

6

Connect the M-16DX to your PC.

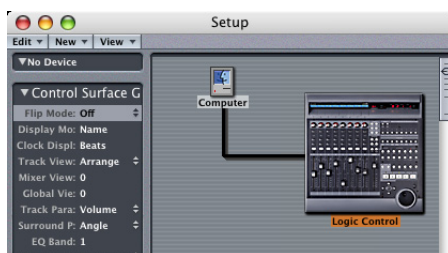
The [USB] button will turn on.

7

Press the lit [USB] button.

The button you pressed will blink, and the M-16DX will switch to DAW controller mode.

* *If you're using Logic, start up Logic before you switch to DAW controller mode. When you switch the M-16DX to DAW controller mode, it will automatically be recognized as a Logic Controller, and the following screen will appear.*



How the M-16DX modes work in each DAW

ALTERNATIVE mode

SONAR/SONAR 6LE.....	p. 4
SONAR 6.0 or earlier/SONAR LE.....	p. 6
Logic/Live.....	p. 8

EXCLUSIVE mode

SONAR/SONAR 6LE.....	p. 11
Logic.....	p. 13

- * Use “ALTERNATIVE mode (SONAR 6.0 or earlier/SONAR LE)” (p. 6), if you’re using a version 6.0 or earlier SONAR series program, or if you’re using SONAR LE.
- * Use “ALTERNATIVE mode (Logic/Live)” (p. 8), if you’re using Live.
- * If you’re using the M-16DX with Logic, make the appropriate settings in Logic as described in “Settings for using Logic with EXCLUSIVE mode” (p. 18).

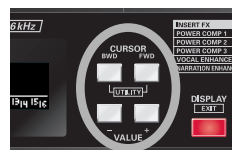
ALTERNATIVE mode (SONAR/SONAR 6 LE)

Choose this mode if you want to operate the mixer and control SONAR at the same time. You can use the eight [AUX] knobs, the eight [SEL] knobs, and the [AUX 1] [AUX 2] buttons to freely control SONAR’s parameters.

- * Before you continue, you must import the preset file for the M-16DX as described in “Importing the preset file for controlling SONAR” (p. 15).



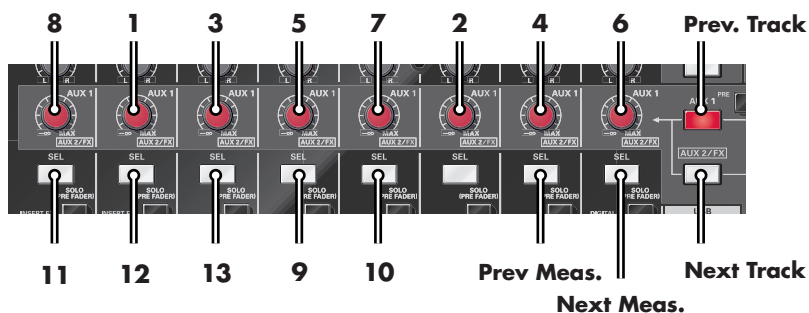
In ALTERNATIVE mode, you can use the M-16DX’s CURSOR [BWD] [FWD] buttons and VALUE [-] [+] buttons to control SONAR’s transport.



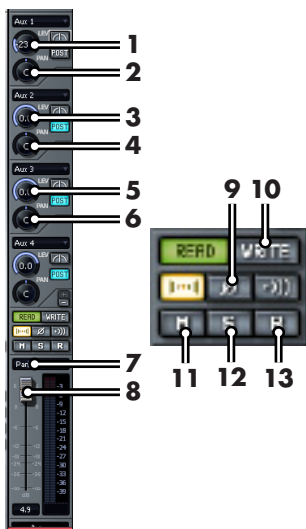
Correspondence between the M-16DX and SONAR

The illustration below shows how M-16DX's buttons and knobs correspond to SONAR parameters. When you operate the M-16DX's buttons or knobs, you'll be controlling the parameters of the correspondingly numbered SONAR track.

M-16DX panel



SONAR track parameters



About the template sheet

You may find it convenient to print out the “Template sheet for SONAR/SONAR 6 LE (ALTERNATIVE mode)” (p. 23) and place it by your system for reference.

ALTERNATIVE mode (SONAR 6.0 or earlier/SONAR LE)

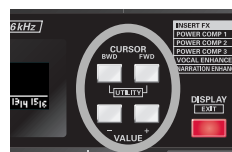
Choose this mode if you want to operate the mixer and control SONAR at the same time. You can use the eight [AUX] knobs and eight [SEL] buttons to control SONAR's Aux Send, Mute, record-arming status, and track volume.



The way in which the M-16DX's buttons and knobs correspond to the SONAR track parameters being controlled will depend on the "Cakewalk Generic Surface" controller plug-in preset. For details on each preset, refer to the pages that follow.

- * Before you continue, you must put the "Cakewalk Generic Surface" controller plug-in in a state whereby it's ready for use, as described in the SONAR owner's manual.

In ALTERNATIVE mode, you can use the M-16DX's CURSOR [BWD] [FWD] buttons and VALUE [-] [+] buttons to control SONAR's transport.



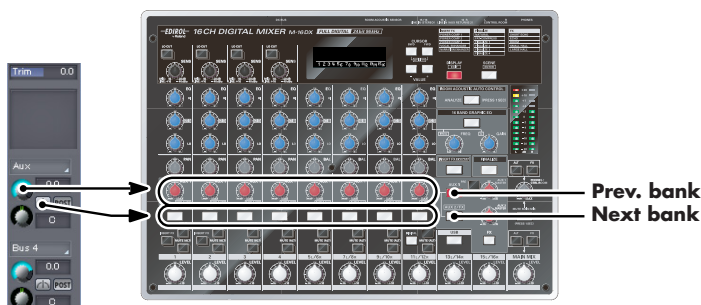
The remaining knobs and buttons will control the M-16DX's mixer functionality.

Pressing the [DISPLAY] button will access the level meter screen. In ALTERNATIVE mode, the "DAW" icon will appear at the left side of the level meter screen.



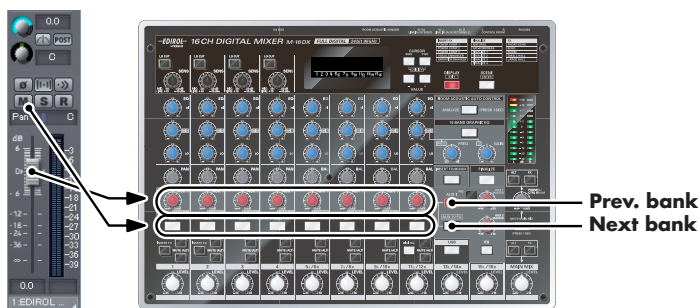
Controlling SONAR's Aux Send 1 (2)

As the “Cakewalk Generic Surface” preset, choose “Roland MCR-8 (Aux Send 1)” (or “Roland MCR-8 (Aux Send 2)”), and you’ll be able to control the send level and on/off status of SONAR’s Aux Send 1 (and Aux Send 2).



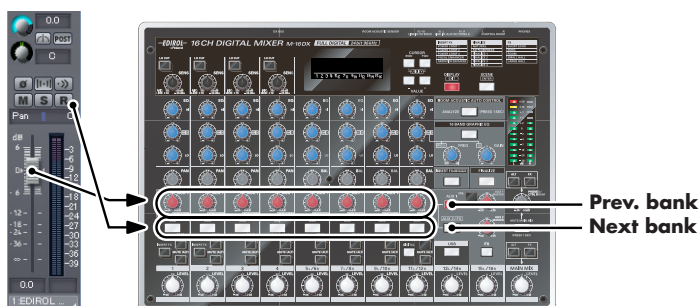
Controlling mute and track volume

As the “Cakewalk Generic Surface” preset, choose “Roland MCR-8 (Mute + Solo),” and you’ll be able to control SONAR’s track muting and track volume.



Controlling record-arming and track volume

As the “Cakewalk Generic Surface” preset, choose “Roland MCR-8 (Record Arming),” and you’ll be able to control SONAR’s record-arming status and track volume.



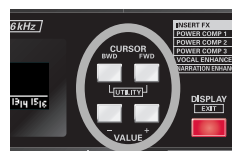
ALTERNATIVE mode (Logic/Live)

Choose this mode if you want to operate the mixer and control Logic/Live at the same time.

You can use the eight [AUX] knobs and eight [SEL] buttons to control Logic or Live.



In ALTERNATIVE mode, you can use the M-16DX's CURSOR [BWD] [FWD] buttons and VALUE [-] [+] buttons to control Logic/Live's transport.



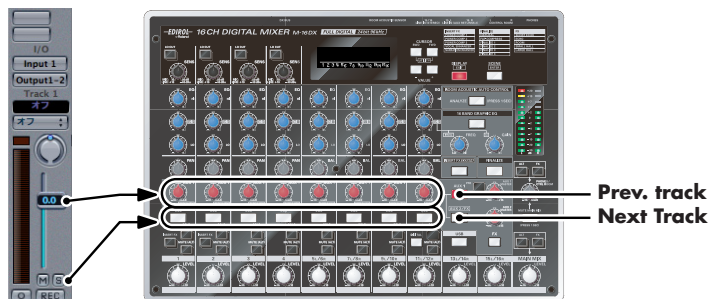
The remaining knobs and buttons will control the M-16DX's mixer functionality.

Pressing the [DISPLAY] button will access the level meter screen. In ALTERNATIVE mode, the "DAW" icon will appear at the left side of the level meter screen.



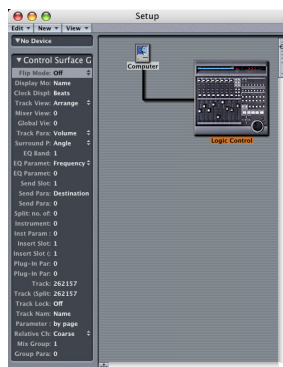
Correspondence between the M-16DX and Logic

The illustration below shows how M-16DX's buttons and knobs correspond to Logic parameters. When you operate the M-16DX's buttons or knobs, you'll be controlling the parameters of the correspondingly numbered Logic track.



Settings for Logic

1. In Logic Pro, execute the Logic Pro – Preference – Control Surface – Setup command to open the Setup screen.



2. Click the Logic Control icon, and in the left side of the Setup screen, change "Track View" to "Arrange."

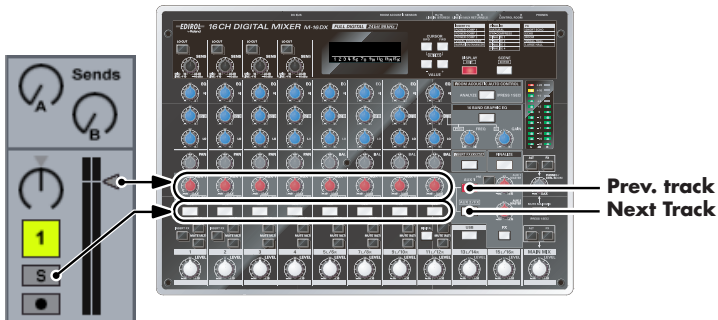
* If the Logic Control icon is not displayed, switch to the DAW Controller mode once again (p. 3).

About the template sheet

You may find it convenient to print out the "Template sheet for Logic/Live (ALTERNATIVE mode)" (p. 23) and place it by your system for reference.

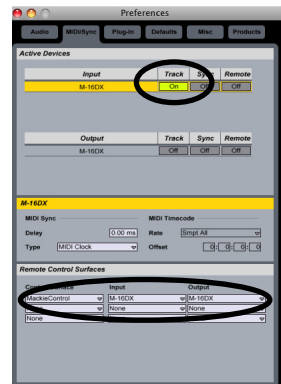
Correspondence between the M-16DX and Live

The illustration below shows how M-16DX's buttons and knobs correspond to Live parameters. When you operate the M-16DX's buttons or knobs, you'll be controlling the parameters of the correspondingly numbered Live track.



Settings for Live

1. Execute the Live - Preferences command to access the Preferences dialog box



2. In the Input field of the "Active Devices" area, set the M-16DX's Track to the On setting. In the "Remote Control Surfaces" area, choose MackieControl in the Control Surface column, and choose M-16DX in the Input column.

About the template sheet

You may find it convenient to print out the "Template sheet for Logic/Live (ALTERNATIVE mode)" (p. 23) and place it by your system for reference.

EXCLUSIVE mode (SONAR/SONAR 6 LE)

This mode is suitable when you've finished multitrack recording on the M-16DX, and intend to be involved in the mastering process, during which you'll mainly be controlling SONAR.

In this mode, you won't be able to control the mixer functionality of the M-16DX itself, but you can use the knobs and buttons shown within the white outline in the M-16DX panel diagram below to control numerous SONAR parameters simultaneously.

- * *Before you continue, you must import the preset file for the M-16DX as described in "Importing the preset file for controlling SONAR" (p. 15).*



NOTE

The knobs and buttons within the white outline are used to control SONAR, not the mixer.

NOTE

In this mode, you won't be able to edit the mixer-related parameters of the M-16DX itself. The state of the knobs and buttons within the white outline can be modified before you switch to DAW controller mode.

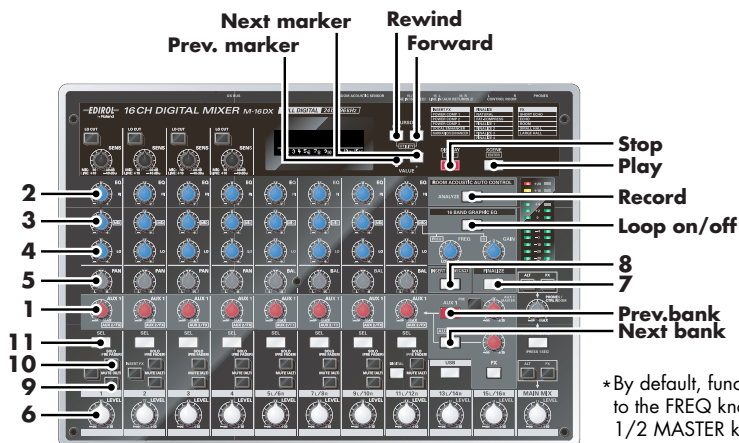
NOTE

When you switch from DAW controller mode to normal mode, the positions of the knobs and the on/off statuses of the buttons will not match the state of the mixer functions. If you want the knob positions and button on/off statuses to match the state of the mixer, you can either manually place all knobs and buttons in their original positions, or you can switch off the M-16DX, then turn it on again.

Correspondence between the M-16DX and SONAR

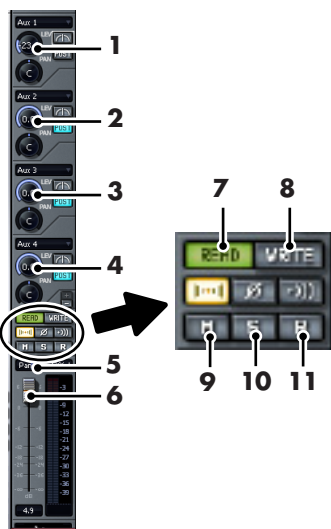
The illustration below shows how M-16DX's buttons and knobs correspond to SONAR parameters. When you operate the M-16DX's buttons or knobs, you'll be controlling the parameters of the correspondingly numbered SONAR track.

M-16DX panel



* By default, functions are not assigned to the FREQ knob, GAIN knob, AUX 1/2 MASTER knob, or FX button. You can assign the desired functions to these controls within SONAR.

SONAR track parameters



About the template sheet

You may find it convenient to print out the "Template sheet for SONAR/SONAR 6 LE (EXCLUSIVE mode)" (p. 21) and place it by your system for reference.

EXCLUSIVE mode (Logic)

This mode is suitable when you've finished multitrack recording on the M-16DX, and intend to be involved in the mastering process, during which you'll mainly be controlling Logic.

In this mode, you won't be able to control the mixer functionality of the M-16DX itself, but you can use the knobs and buttons shown within the white outline in the M-16DX panel diagram below to control numerous Logic parameters simultaneously.

- * *Before you continue, make the appropriate settings in Logic as described in "Settings for using Logic with EXCLUSIVE mode" (p. 18).*



NOTE

The knobs and buttons within the white outline are used to control Logic, not the mixer.

NOTE

In this mode, you won't be able to edit the mixer-related parameters of the M-16DX itself. The state of the knobs and buttons within the white outline can be modified before you switch to DAW controller mode.

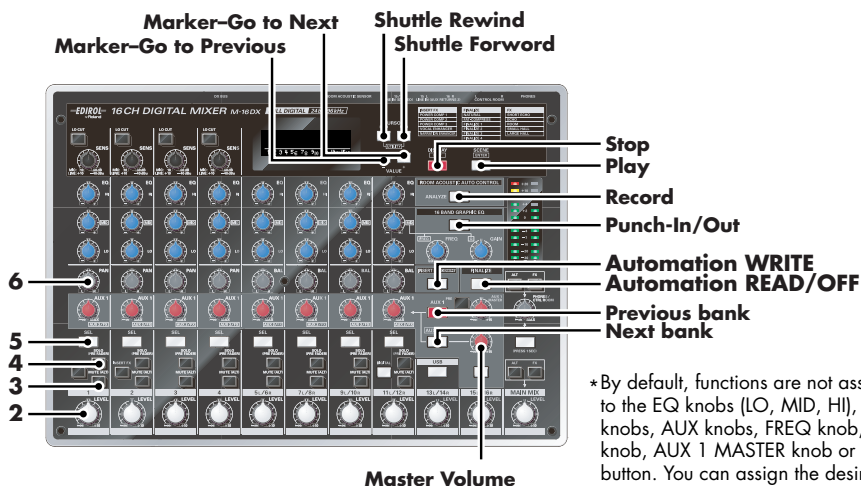
NOTE

When you switch from DAW controller mode to normal mode, the positions of the knobs and the on/off statuses of the buttons will not match the state of the mixer functions. If you want the knob positions and button on/off statuses to match the state of the mixer, you can either manually place all knobs and buttons in their original positions, or you can switch off the M-16DX, then turn it on again.

Correspondence between the M-16DX and Logic

The illustration below shows how M-16DX's buttons and knobs correspond to Logic parameters. When you operate the M-16DX's buttons or knobs, you'll be controlling the parameters of the correspondingly numbered Logic track.

M-16DX panel



*By default, functions are not assigned to the EQ knobs (LO, MID, HI), PAN knobs, AUX knobs, FREQ knob, GAIN knob, AUX 1 MASTER knob or FX button. You can assign the desired functions to these controllers within Logic.

Logic track parameters



About the template sheet

You may find it convenient to print out the "Template sheet for Logic (EXCLUSIVE mode)" (p. 22) and place it by your system for reference.

Importing the preset file for controlling SONAR

NOTE

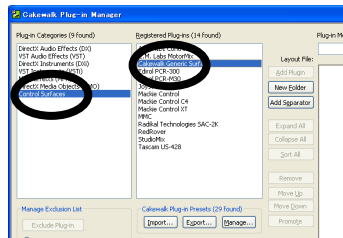
Since you'll need Cakewalk Plug-in Manager Version 3.0 or later to import this file, you must have SONAR version 6.2 or later, or SONAR 6 LE.

1

Execute the Tools - Cakewalk Plug-in Manager command to open the Cakewalk Plug-in Manager.

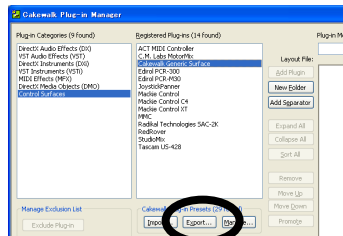
2

In Cakewalk Plug-in Manager, choose "Control Surfaces" in "Plug-in Categories," and choose "Cakewalk Generic Surface" in "Registered Plug-ins."



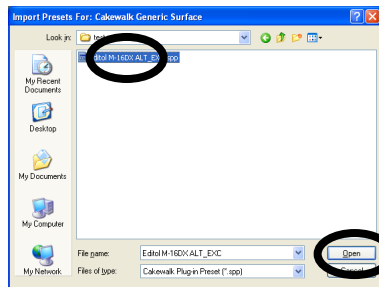
3

In Cakewalk Plug-in Manager, click the "Import" button to open the "Import Presets" dialog box.



4

In the "Import Presets" dialog box, select the M-16DX plug-in's presets (Ediol M-16DX ALT_EXC.spp) and click "Open."

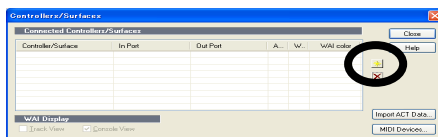


5

In Cakewalk Plug-in Manager, click the "Close" button to close Cakewalk Plug-in Manager.

- 6** Execute the Options - Controllers/Surfaces command to open the Controllers/Surfaces dialog box.

- 7** In the Controllers/Surfaces dialog box, click the “Add” button to open the “Controller/Surface Settings” dialog box.



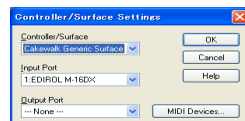
- 8** In the “Controller/Surface Settings” dialog box, make the following settings.

Control Surface:

Specify “Cakewalk Generic Surface”

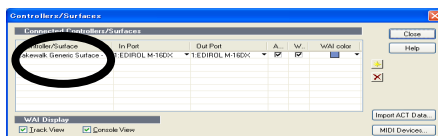
Input Port:

Specify “EDIROL M-16DX”



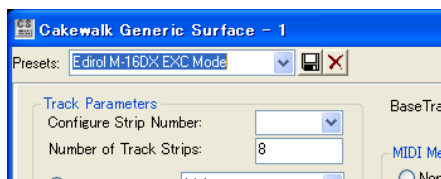
When you’ve finished making settings, click “OK” to close the dialog box.

- 9** Return to the Controllers/Surfaces dialog box and verify that “Cakewalk Generic Surface” has been added. Then click “Close” to close the dialog box.



- 10** Execute the Tools - Cakewalk Generic Surface command to open the property page for Cakewalk Generic Surface.

- 11** In the property page for Cakewalk Generic Surface, choose one of the following “Presets” as appropriate for your situation.



To use the M-16DX in ALTERNATIVE mode:

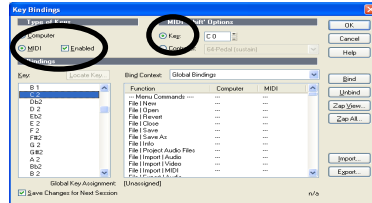
“Edirol M-16DX ALT Mode”

To use the M-16DX in EXCLUSIVE mode:

“Edirol M-16DX EXC Mode”

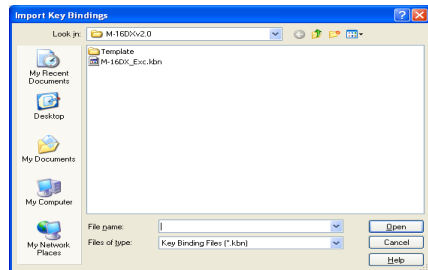
12 Execute the Options - Key Bindings command to open the Key Bindings dialog box.

13 In the Key Bindings dialog box, select the “MIDI” “Enable” option located in the Type of Keys area, and select the “Key” option located in the MIDI Shift Options area.



14 In the Key Bindings dialog box, click the “Import” button to open the “Import Key Bindings” dialog box.

15 Select “M-16DX_Exc.kbn” and click “Open.”



This completes settings for SONAR.

Settings for using Logic with EXCLUSIVE mode

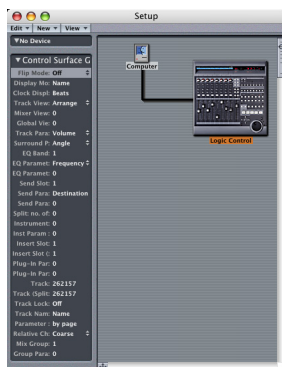
If you use the M-16DX as a DAW controller with Logic, the M-16DX will be recognized by Logic as a Logic Control unit. However, since some functionality will be different than Logic Control, you'll need to use the following methods to control Logic's solo, mute, and pan settings.

* This process is necessary only when using the M-16DX in EXCLUSIVE mode. You don't need to change these settings when using ALTERNATIVE mode.

1

In Logic Pro, execute the Logic Pro – Preference – Control Surface – Setup command to open the Setup screen.

If the Logic Control icon is not displayed, switch to the DAW Controller mode once again (p. 3).



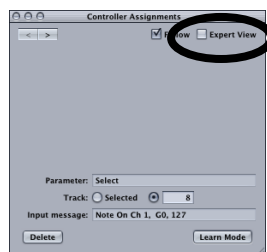
2

Click the Logic Control icon, and in the left side of the Setup screen, change “Track View” to “Arrange.”

3

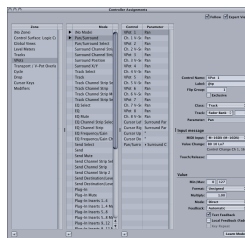
In Logic Pro, execute the Preference – Control Surface – Controller Assignments command to open Controller Assignments.

If the [Expert View] check box is not selected, select it to enable "Expert View."



4

In the Controller Assignments “Expert View,” change the solo, mute, and pan settings using the procedures described below.



Solo settings (example: SOLO ch 1 setting)

1. On the M-16DX, press the channel 1 SOLO button.
In Controller Assignments, the cursor will automatically move to the Ch. 1 Solo position.
2. In the lower right of the Controller Assignments screen, change the settings of the following items.

Item	Value
Value Change	Change the last block to "Lo7" (example: change "90 08 00" to "90 08 Lo7")
Min/Max	0/127
Mode	Direct

3. In the same way, change the settings for SOLO Ch2– Ch8.

Mute settings (example: MUTE ch 1 setting)

1. On the M-16DX, press the channel 1 MUTE button.
In Controller Assignments, the cursor will automatically move to the Ch. 1 Mute position.
2. In the lower right of the Controller Assignments screen, change the settings of the following items.

Item	Value
Value Change	Change the last block to "Lo7" (example: change "90 08 00" to "90 08 Lo7")
Min/Max	0/127
Mode	Direct

3. In the same way, change the settings for MUTE Ch2– Ch8.

Pan settings (example: PAN ch 1 setting)

1. In Logic's Mixer View, use the mouse to adjust the pan of Track 1.
2. In the lower right of the Controller Assignments screen, click "Learn More."
3. On the M-16DX, adjust the pan of Track 11.
4. Once again, click "Learn More" in the lower right of the Controller Assignments screen.
5. A message will ask you to confirm the reassignment. Click "Reassign."



6. In the lower right of the Controller Assignments screen, change Mode to "Direct."
7. In the same way, change the settings for PAN 2 and the items that follow it.

This completes the settings for Logic.

Scene Edit function

This function lets you edit the settings of a stored scene.

Enabling scene editing

- 1 **Simultaneously press the CURSOR [BWD] and [FWD] buttons.**

The UTILITY screen will appear.

- 2 **Use the CURSOR [FWD] button to select “SCENE LOCK.”**

With the factory settings this is turned “ON.”

- 3 **Use the VALUE [-] button to select “OFF.”**

You'll be able to edit the scene settings even if a scene is called up.



- 4 **Press the [EXIT] button to return to the previous screen.**

Editing the settings of a scene

- 5 **Select the scene whose settings you want to edit.**

For the procedure, refer to the M-16DX Owner's Manual.

- 6 **Turn the knobs to edit the parameters.**

When any parameter has been edited, an “*” will appear below the number of the currently selected scene.

NOTE

When you select a scene, the values indicated by the physical positions of the knobs will no longer correspond to the values of the parameters. If you want the physical positions of the knobs to correspond to the parameter values, turn each knob all the way to left or right, and then return the knob to the desired position.

NOTE

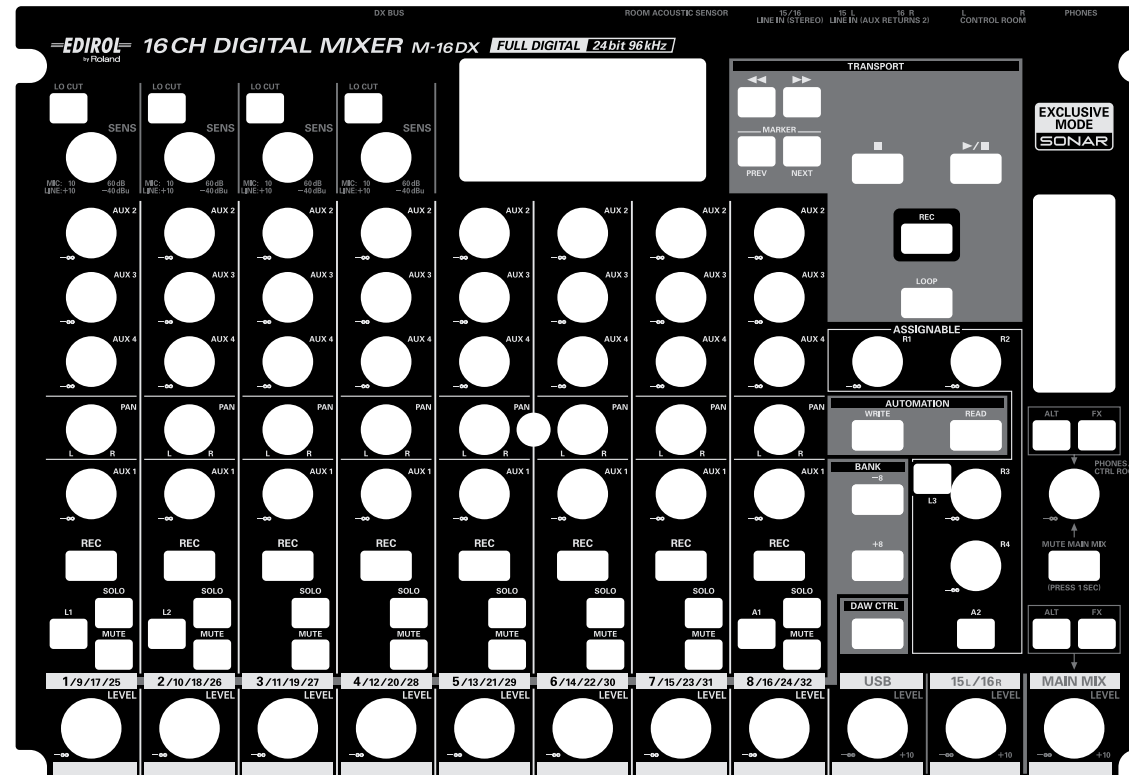
If you turn off the power, exit the scene store screen, or select a different scene before you save the edited settings, the changes you made will be lost. Be sure to save the scene if you want to keep your changes.

Appendix

Template sheet for SONAR/SONAR 6 LE (EXCLUSIVE mode)

You may find it convenient to print this template sheet and place it by your system when using the M-16DX in EXCLUSIVE mode to control SONAR/SONAR 6LE.

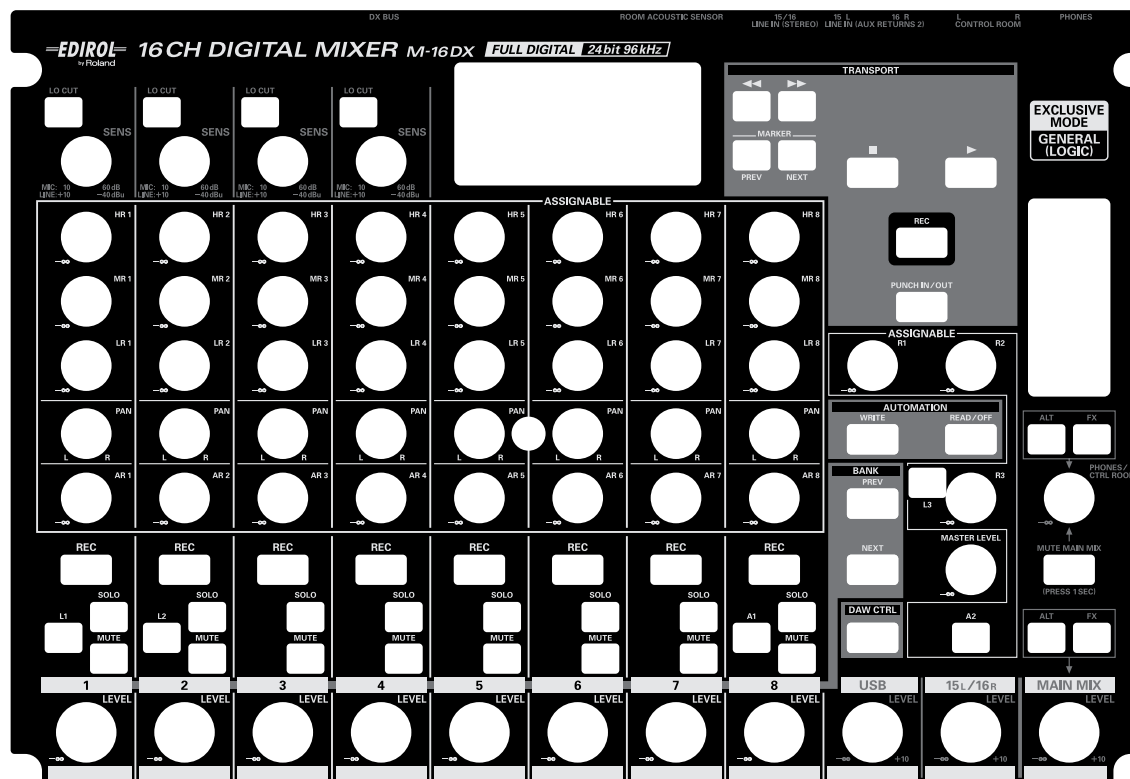
* This data was created at a 50% reduction of the original dimensions. By printing it at a magnification of 200%, you can obtain a printed copy in the original size. For details on how to print using a magnification setting, refer to the documentation for Adobe Reader and to the owner's manual of your printer.



Template sheet for Logic (EXCLUSIVE mode)

You may find it convenient to print this template sheet and place it by your system when using the M-16DX in EXCLUSIVE mode to control Logic.

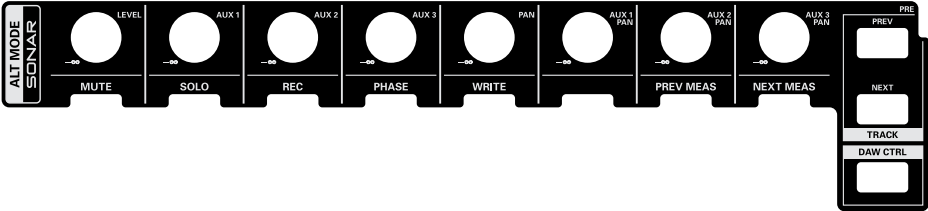
* This data was created at a 50% reduction of the original dimensions. By printing it at a magnification of 200%, you can obtain a printed copy in the original size. For details on how to print using a magnification setting, refer to the documentation for Adobe Reader and to the owner's manual of your printer.



Template sheet for SONAR/SONAR 6 LE (ALTERNATIVE mode)

You may find it convenient to print this template sheet and place it by your system when using the M-16DX in ALTERNATIVE mode to control SONAR/SONAR 6LE.

* This data was created at a 50% reduction of the original dimensions. By printing it at a magnification of 200%, you can obtain a printed copy in the original size. For details on how to print using a magnification setting, refer to the documentation for Adobe Reader and to the owner's manual of your printer.



Template sheet for Logic/Live (ALTERNATIVE mode)

You may find it convenient to print this template sheet and place it by your system when using the M-16DX in ALTERNATIVE mode to control Logic/Live.

* This data was created at a 50% reduction of the original dimensions. By printing it at a magnification of 200%, you can obtain a printed copy in the original size. For details on how to print using a magnification setting, refer to the documentation for Adobe Reader and to the owner's manual of your printer.

