

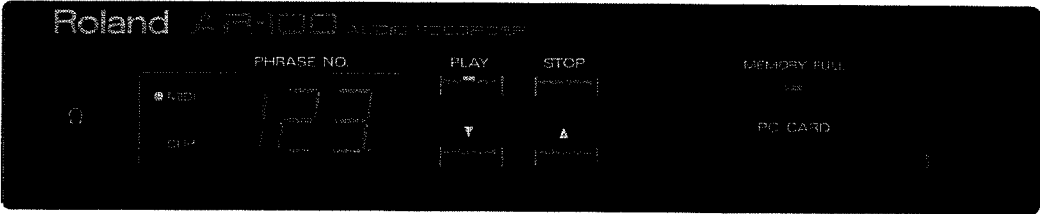
!

# Roland

# AR-100

# AUDIO RECORDER

# OWNER'S MANUAL



For the U.K.

**IMPORTANT:** THE WIRES IN THIS MAINS LEAD ARE COLOURED IN ACCORDANCE WITH THE FOLLOWING CODE.

BLUE: NEUTRAL  
BROWN: LIVE

As the colours of the wires in the mains lead of this apparatus may not correspond with the coloured markings identifying the terminals in your plug, proceed as follows:

The wire which is coloured BLUE must be connected to the terminal which is marked with the letter N or coloured BLACK.

The wire which is coloured BROWN must be connected to the terminal which is marked with the letter L or coloured RED.

Under no circumstances must either of the above wires be connected to the earth terminal of a three pin plug.

For EU Countries



This product complies with the requirements of European Directive 89/336/EEC.

For the USA

## FEDERAL COMMUNICATIONS COMMISSION RADIO FREQUENCY INTERFERENCE STATEMENT

This equipment has been tested and found to comply with the limits for a Class B digital device, pursuant to Part 15 of the FCC Rules. These limits are designed to provide reasonable protection against harmful interference in a residential installation. This equipment generates, uses, and can radiate radio frequency energy and, if not installed and used in accordance with the instructions, may cause harmful interference to radio communications. However, there is no guarantee that interference will not occur in a particular installation. If this equipment does cause harmful interference to radio or television reception, which can be determined by turning the equipment off and on, the user is encouraged to try to correct the interference by one or more of the following measures:

- Reorient or relocate the receiving antenna.
- Increase the separation between the equipment and receiver.
- Connect the equipment into an outlet on a circuit different from that to which the receiver is connected.
- Consult the dealer or an experienced radio/TV technician for help.

Unauthorized changes or modification to this system can void the users authority to operate this equipment.  
This equipment requires shielded interface cables in order to meet FCC class B Limit.

For Canada

### NOTICE

This Class B digital apparatus meets all requirements of the Canadian Interference-Causing Equipment Regulations.

### AVIS

Cet appareil numérique de la classe B respecte toutes les exigences du Règlement sur le matériel brouilleur du Canada.

# Roland

## AR-100

## AUDIO RECORDER

### Owner's Manual

## Introduction

Thank you for purchasing the Roland AR-100 Audio Recorder.

In order to take full advantage of the AR-100's functionality and to enjoy long years of trouble-free use, please read this manual carefully.

After reading the manual, please keep it for future reference.

*\* This device does not contain memory for recording/playback. In order to record or playback, you will need to purchase one of the PC cards as described on page 22 "Applicable PC cards".*

## Main features

- Roland's proprietary RDAC provides high sound quality with lower data volumes.
- The PC card-based recording system uses no moving parts. It provides excellent sound quality and superior reliability.
- A wide variety of control terminals are provided, allowing you to choose the playback method appropriate for your needs.
- Line inputs and MIDI connectors are provided, allowing recording and playback of audio signals, MIDI messages
- The compact half-rack size body takes little space, and can be conveniently transported. If a separately sold RAD-50 rack mount adaptor is used, the AR-100 can be installed in an EIA rack.
- Since external DC power supply is also supported, a wide variety of applications are possible.
- The line inputs feature a muting function. When phrase playback begins, the signal from the line inputs can be automatically cut.
- A headphone jack is provided for convenient monitoring while you record.

## About the display

Please be aware that the displays shown in this manual may occasionally differ from the displays of the factory settings.

## About PC cards

The PC cards used by the AR-100 are sold separately. Refer to the section "Applicable PC cards" on page 22.

All trademarks and registered trademarks are the property of their respective companies.

# Contents

Introduction .....	1
Main features .....	1
About the display.....	1
About PC cards .....	1
Precautions .....	3
Front and rear panel.....	4

## 1. Media handling

■ Playback time (recording type:MONO) .....	5
○ ORDAC-Mode 1 .....	5
○ ORDAC-Mode 2 .....	5
■ PC card handling .....	5
Insertion .....	5
Removal .....	5

## 2. Basic operation using a Flash Disk card

■ Preparations .....	6
● What is a phrase? .....	6
● Mode switches .....	6
● Example of a setup .....	6
■ Rack mounting .....	6
■ Attaching the Card Protector .....	6
■ Playback procedure .....	7
● Manual playback .....	7
■ Method of recording.....	7
● Recording procedure .....	7
● Mono recording .....	8
■ Recording settings .....	8
● RDAC-GRADE (sampling rate) .....	8
● RDAC-Mode (recording mode) .....	8
● Recording Type .....	8

## 3. Control I/O

■ Control Input .....	9
● Playback by control signal .....	9
1) Playback by card data .....	9
a) Card made on the AR-2000.....	9
b) Card made on the AR-100 .....	9
2) Direct Playback (Last-In).....	10
3) Binary Playback.....	10
Phrase Number / Binary Signal chart.....	11
4) Interval Playback.....	12
■ Control Output .....	12
1) Busy Output.....	12
2) Control Output.....	12
■ Control I/O specifications.....	13

● DC power supply .....	13
-------------------------	----

## 4. Other function

■ Delete Phrase / Delete Card .....	14
■ Format.....	14

## 5. MIDI

■ MIDI Receive Channel setting .....	15
■ Playback using MIDI .....	15
1) Program Change:1 (PC=1) .....	15
2) Program Change:2—6 (PC=2—6) .....	15
■ Recording MIDI messages .....	16

## 6. Appendix

■ Mode switch setting.....	17
● How to use the mode switch .....	17
■ Phrase data for recording.....	18
■ Settings after formatting.....	18
■ AR-2000 settings that can be used.....	18

Error messages .....	19
----------------------	----

MIDI Implementation charts .....	20
----------------------------------	----

Specifications .....	22
----------------------	----

DIMENSIONS .....	23
------------------	----

Index.....	24
------------	----

Information .....	25
-------------------	----

# Precautions

Be sure to use only the AC adaptor supplied with the unit. Use of any other AC adaptor could result in damage, malfunction, or electric shock.

## ■ Power Supply

- Before connecting this unit to other devices, turn off the power to all units; this will help prevent damage or malfunction.
- Do not use this unit on the same power circuit with any device that will generate line noise; an electric motor or variable lighting system for example.
- The power requirement for this unit is indicated on its nameplate (rear panel). Ensure that the voltage in your installation meets this requirement.
- Avoid damaging the power cord: do not step on it, place heavy objects on it, etc.
- When disconnecting the AC adaptor from the power outlet, grasp the plug itself; never pull on the cord.
- If the unit is to remain unused for an extended period of time, unplug the power cord.

## ■ Placement

- Do not subject the unit to temperature extremes (eg., direct sunlight in an enclosed vehicle). Avoid using or storing the unit in dusty or humid areas, or areas that are subject to high levels of vibration.
- Using the unit near power amplifiers (or other equipment containing large power transformers) may induce hum.
- This device may interfere with radio and television reception. Do not use this device in the vicinity of such receivers.

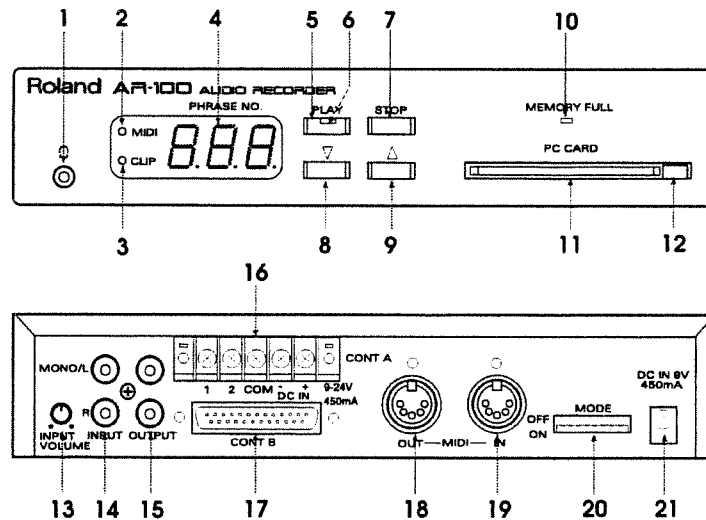
## ■ Maintenance

- For everyday cleaning wipe the unit with a soft, dry cloth or one that has been slightly dampened with water. To remove stubborn dirt, use a mild, non-abrasive detergent. Afterwards, be sure to wipe the unit thoroughly with a soft, dry cloth.
- Never use benzene, thinners, alcohol or solvents of any kind, to avoid the possibility of discoloration and/or deformation.

## ■ Additional Precautions

- Protect the unit from strong impact.
- Do not allow objects or liquids of any kind to penetrate the unit. In the event of such an occurrence, discontinue use immediately. Contact qualified service personnel as soon as possible.
- Never strike or apply strong pressure to the display.
- Should a malfunction occur, or if you suspect there is a problem, discontinue use immediately. Contact qualified service personnel as soon as possible.
- To avoid the risk of electric shock, do not open the unit or its AC adaptor.

# Front and rear panel



## << Front panel >>

1. PHONES jack
2. MIDI indicator
3. CLIP indicator
4. Display
5. PLAY button
6. PLAY indicator
7. STOP button
8. DECrement (▼) button
9. INCrement (▲) button
10. MEMORY FULL indicator
11. CARD slot
12. Eject button

## << Rear panel >>

13. INPUT VOLUME
14. INPUT jacks
15. OUTPUT jacks
16. Control input and DC input terminal (CONT A)
17. Control I/O connector (CONT B)
- \* This is not an RS-232C type connector. Never use improper cables or connect an incompatible unit to this connector.
18. MIDI OUT connector
19. MIDI IN connector
20. MODE switches
21. Power connector (for supplied AC adaptor)
- \* Be sure to use only the AC adaptor supplied with the unit.

# 1. Media handling

The AR-100 does not contain memory for recording/playback. In order to recording/playback of audio signal and MIDI data, you will need to purchase one of the PC cards. Please refer to the section "Applicable PC cards" on page 22.

## ■ Playback time (recording type: MONO)

Playback time will depend on the RDAC-GRADE (p.8) and RDAC-Mode (p.8) settings.

### ○ RDAC-Mode 1

Capacity (Bytes)	Playback time			
	HIGH	STANDARD	LONG 1	LONG 2
2 M	01:29	02:02	02:58	04:05
4 M	03:03	04:12	06:06	08:25
8 M	06:09	08:28	12:18	16:57
12 M	09:14	12:44	18:29	25:28
20 M	15:25	21:15	30:52	42:31
40 M	30:53	42:34	1:01:48	1:25:08
80 M	1:01:48	1:25:11	2:03:40	2:50:22
184 M	2:22:17	3:16:06	4:44:43	6:32:12

### ○ RDAC-Mode 2

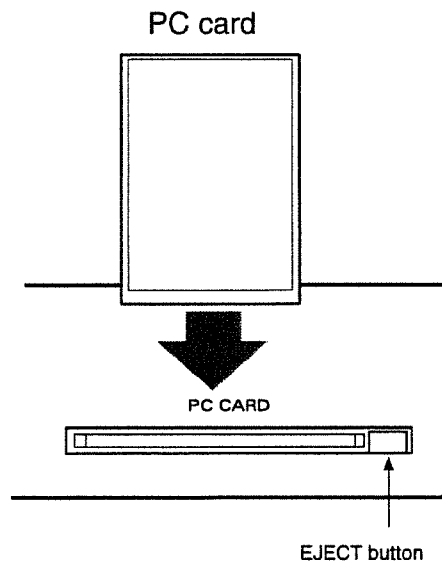
Capacity (Bytes)	Playback time			
	HIGH	STANDARD	LONG 1	LONG 2
2 M	00:59	01:21	01:58	02:43
4 M	02:02	02:48	04:04	05:36
8 M	04:06	05:39	08:12	11:18
12 M	06:09	08:29	12:19	16:58
20 M	10:17	14:10	20:34	28:20
40 M	20:35	28:22	41:12	56:45
80 M	41:12	56:47	1:22:27	1:53:34
184 M	1:34:52	2:10:44	3:09:49	4:21:28

- When stereo is used, the times will be 1/2 as long.
- \* These times are for when 1 phrase is recorded continuously, and are provided for your reference when recording. The recording time will depend on the combination of the RDAC-GRADE and RDAC-Mode settings of each phrase recorded in each PC card.

## ■ PC card handling

### Insertion

Insert the PC card all the way into the card slot, until it is securely in place.



### Removal

To remove the PC card, press the Eject button.

- \* Never remove a PC card while playback/recording a phrase. It is possible that the data in the PC card will be damaged

# 2. Basic operation using a Flash Disk card

## ■ Preparations

### ● What is a phrase?

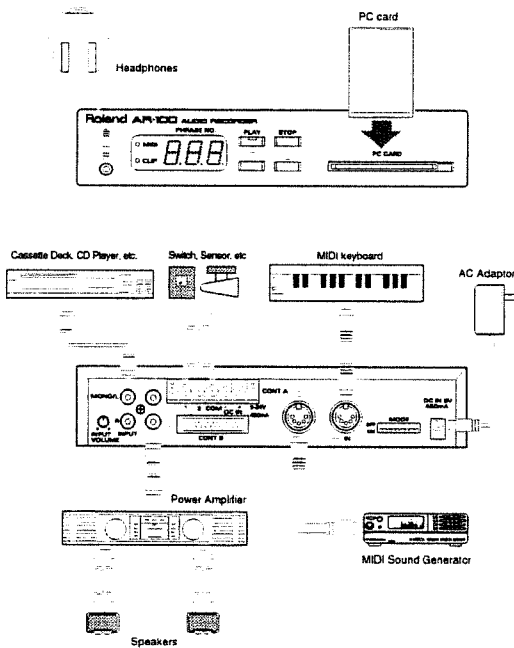
On the AR-100, a piece of recorded data (Audio signals, MIDI messages) is referred to as a Phrase. Phrases are identified by their Phrase number.

### ● Mode Switches

The mode switches (rear panel) of AR-100 are possible a wide variety of settings.

Before using the AR-100, please set the MODE switches to the correct settings (p.17). If the settings are incorrect, the unit will not operate correctly.

### ● Example of a setup



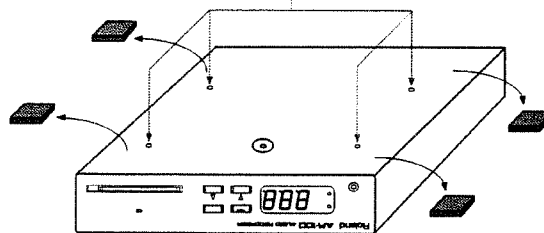
\* Before making connections, be sure to turn the power off. Power switch is not provided. Turn off the power remove the AC adaptor from the AR-100.

## ■ Rack mounting

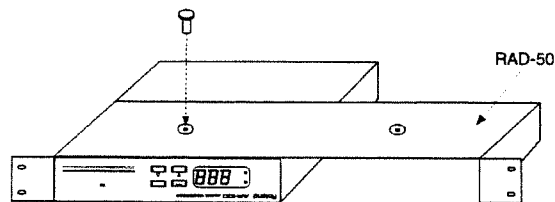
By attaching a rack mount adaptor to the AR-100 (RAD-50: sold separately) you can install it in an EIA rack. One RAD-50 can accommodate up to two AR-100 units.

1. Remove the four rubber feet from bottom of the unit.

Note: Do not use these holes.



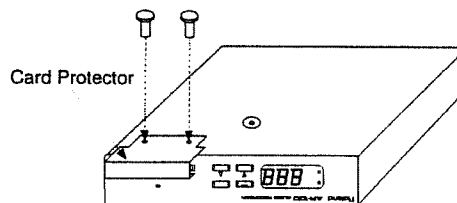
2. Attach the RAD-50 adaptor to the AR-100 using the screws that are supplied with the RAD-50.



## ■ Attaching the Card Protector

By attaching the Card Protector (supplied) to the AR-100, you can prevent the PC card from inadvertently being removed from the AR-100.

1. Attach the Card Protector to the AR-100 using the screws that are supplied with it.





---

## ■ Playback procedure

---

### ● Manual playback

Here is how to playback the phrase to check the recording. The sound will be output from the Phones jack and from the output jacks.

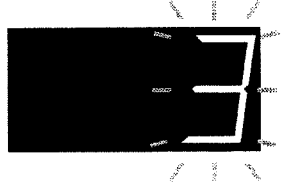
1. Insert a PC card containing recorded phrases into a card slot.



2. Press the Increment (▲)/Decrement (▼) button to select the phrase you wish to playback.



- The non-recording phrase number in display is flashed.



3. Press the PLAY button and the phrase will playback. If you wish to interrupt phrase playback, press the STOP button.
  - The PLAY indicator and the dot in display is lit while playing back.



---

## ■ Method of recording

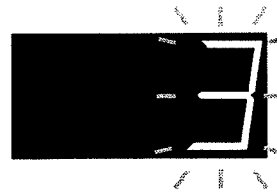
---

### ● Recording procedure

1. Connect a cassette deck or CD player etc. to the input jacks of the AR-100.
2. Insert a PC card into card slot.

3. Press the Increment (▲)/Decrement (▼) button to select non-recording phrase.

- The non-recording phrase number in display is flashed.



- \* If you are re-recording over a previously recorded phrase, you should delete the phrase.(p.14)

4. While holding down the STOP button, press the PLAY button. (Recording standby mode)

- The PLAY indicator is flashed while the recording standby mode.

5. Input an audio signal from a cassette deck or CD player, etc.,and use the INPUT VOLUME to adjust the recording level so that the CLIP indicator do not light. (Nominal input level : -10dBm, Maximum input level : -4dBm)

- \* Press the STOP button and recording standby mode will end.

- \* If signals louder than -4 dBm are being input, rotate the input volume knob to the left of center.

6. Press the PLAY button and input an audio signal from a cassette deck or CD player, etc.,and recording will begin.

- \* Even after the PLAY button is pressed, recording will not begin until sound is input.(trigger recording standby mode)

- The PLAY indicator is lit while the trigger recording standby mode.

Recording will begin automatically when the audio signal input AR-100.

- The dot in display is flashed while the recording.



- \* When the card becomes full, recording will stop automatically.

- When the remaining recording time is less than 10 seconds, the remaining recording time display will automatically appear.



- \* The MEMORY FULL indicator tells how much recording time is left. When 90% of the recording capacity has been used, the MEMORY FULL indicator will blink. When 100% has been used, the indicator will light.

7. Press the STOP button and recording will end.

## ● Mono Recording

- Recording will be mono if you select mono as the setting of the Recording Type setting (SW4) of the MODE switch.
- When recording in mono, input the audio signal from the MONO/L input jack.
- During mono recording and while waiting to record, the audio signal will be output only from the MONO/L output jack and from the left channel of the headphones. The recording signal cannot be monitored from the R output jack or from the right channel of the headphones.
- A phrase recorded in mono will be played back from both output jacks MONO/L and R, and also from both headphone channels L and R.

## ■ Recording settings

- You can select from a variety of recording methods as suitable for the recording time and sound quality that you require.
- Recording settings are determined by the settings of the rear panel MODE switches (p.17).

\* Record settings are valid only during recording. They are ignored during playback.

## ● RDAC-GRADE (sampling rate)

HIGH            for high quality recording (44.1 kHz)  
 STANDARD    for normal recording (32 kHz)  
 LONG1        for long recording (22.05 kHz)  
 LONG2        for even longer recording (16 kHz)  
                   ( ) : sampling rate

- RDAC-GRADE setting

The combination of the settings of MODE switches SW1 and SW2 determines the RDAC-GRADE.

	SW1	SW2
HIGH	ON	ON
STANDARD	OFF	ON
LONG1	OFF	OFF
LONG2	ON	OFF

## ● RDAC-Mode(recording mode)

RDAC-Mode1    extended recording time  
 RDAC-Mode2    normal recording time

- RDAC-Mode setting

MODE switch SW3 sets the RDAC-Mode.

	SW3
RDAC-Mode1	OFF
RDAC-Mode2	ON

## ● Recording Type

MONO            Mono recording  
 STEREO         Stereo recording

- Recording Type setting

MODE switch SW4 sets the Recording Type.

	SW4
MONO	OFF
STEREO	ON

# 3. Control I/O

## ■ Control Input

### ● Playback by control signal

- You can connect a switch, relay, or program timer to control phrase playback from an external device.
- Four playback methods are available; Playback by card data, Direct Playback (Last-In), Binary Playback, and Interval Playback.
- Settings for the playback method are made using the MODE switches (rear panel).

\* When using a card that was created on the AR-2000, use "Playback by card data." With other playback methods, settings other than phrase settings will be ignored. (Refer to p.18, or the AR-2000 owner's manual.)

	SW5	SW6
Playback by card data	OFF	OFF
Direct Playback(Last-In)	ON	OFF
Binary Playback	OFF	ON
Interval Playback	ON	ON

#### Control signal:

An on/off (open/close) or open collector.

The control signals are input by electrically shorting (turning on) the COM (common) pin with Control Input and DC Input Terminal (CONT A) pin 1, 2, Control I/O Connector(CONT B) pin 1—9 or STOP (p.13).

\* Control Input and DC Input Terminal "1,2" have the same function as Control I/O Connector "1,2."

### 1) Playback by card data

#### a) Card made on the AR-2000

- Playback will use the settings (playback method) recorded in the card.

For details, refer to AR-2000 manual.

\* Some functions are not available. (p.18)

#### b) Card made on the AR-100

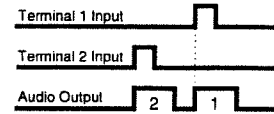
- Each phrase 1—9 can be assigned to each 1—9 of the Control I/O Connector pins.
- Playback mode is available Direct Playback(Normal).

#### Direct Playback (Normal) :

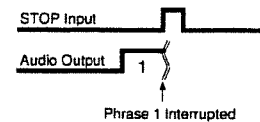
The desired phrase can be played back.  
The phrase number have a priority order.

#### Control Input pins:

- 1-9: Playback the phrase that was specified for the pin on which the control signal was input.



STOP: When a control signal is input during phrase playback, phrase playback will be interrupted.

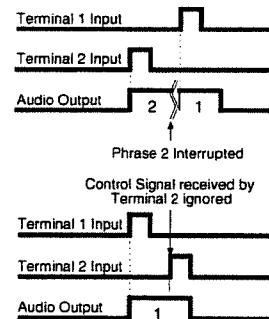


#### Priority:

The control input pins have a priority order.

The priority order is as follows:

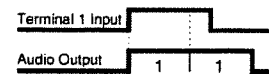
1 > 2 > 3 > ... > 9



\* It is not possible to playback a lower-priority phrase while a higher-priority phrase is playing back.

#### Consecutive playback:

- While a control signal is continuously input to control input, the phrase will be repeatedly played back.



## 2) Direct Playback (Last-In)

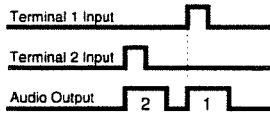
The desired phrase can be played back.

- Each phrase 1—9 can be assigned to each 1—9 of the Control I/O Connector pins.

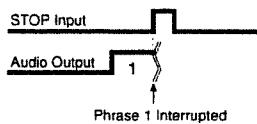
\* Settings made on the AR-2000 will be ignored except for the phrase settings. (p.18)

### Control Input pins:

1—9: Playback the phrase that was specified for the pin on which the control signal was input.

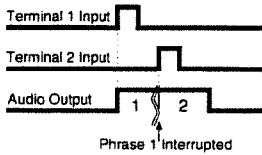


STOP: When a control signal is input during phrase playback, phrase playback will be interrupted.



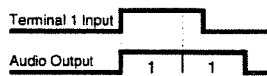
### Priority:

- If a control signal is input while a phrase is playing back, the last-input control signal will take priority, and after the currently playing phrase is stopped, the specified phrase will playback.



### Consecutive playback:

- While a control signal is continuously input to control input, the phrase will be repeatedly played back.



## 3) Binary Playback

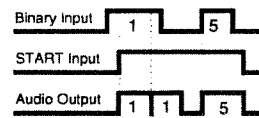
- Control signals (on/off switches, etc.) can select and playback any phrase. Complex devices such as a personal computer are not required.

### Control Input pins:

1—8: Select the phrase number corresponding to the combination of pins on which control signals are input.

9/START: Playback the selected phrase.

STOP: If a control signal is input to this pin while a phrase is playing back, phrase playback will be stopped.



\* Phrase playback will begin when both the binary inputs and the "START" input are ON.

\* When the control signals are continuously input to both the binary inputs and the "START" inputs, the specified phrase will be played back repeatedly.

\* If the phrase is changed while a control signal is input to "START," the specified phrase will be played back.

When the "START" control signal or the binary input goes OFF, playback will end when the currently-playing phrase is finished.

\* Settings made on the AR-2000 will be ignored except for the phrase settings. (p.18)

### Specifying and playing back a phrase

Example: To playback, Phrase number 112

1. Convert the phrase number to a binary signal.

- Refer to the Phrase Number / Binary Signal chart (p.11) to convert the phrase number into a binary signal.

0: OFF

1: ON

Phrase number: 112 → Binary signal: 01110000

2. Input the binary signal into each 1—8 of the Control I/O Connector pins..

87654321

112 01110000

3. Input the playback start signal to START.

- To halt a phrase during playback, input a stop signal while the "START" input or the binary input is OFF.

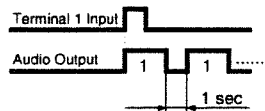
## Phrase Number / Binary Signal chart

Phrase No.	Binary 87654321	Phrase No.	Binary 87654321	Phrase No.	Binary 87654321	Phrase No.	Binary 87654321	Phrase No.	Binary 87654321
001	00000001	051	00110011	101	01100101	151	10010111	201	11001001
002	00000010	052	00110100	102	01100110	152	10011000	202	11001010
003	00000011	053	00110101	103	01100111	153	10011001	203	11001011
004	00000100	054	00110110	104	01101000	154	10011010	204	11001100
005	00000101	055	00110111	105	01101001	155	10011011	205	11001101
006	00000110	056	00111000	106	01101010	156	10011100	206	11001110
007	00000111	057	00111001	107	01101011	157	10011101	207	11001111
008	00001000	058	00111010	108	01101100	158	10011110	208	11010000
009	00001001	059	00111011	109	01101101	159	10011111	209	11010001
010	00001010	060	00111100	110	01101110	160	10100000	210	11010010
011	00001011	061	00111101	111	01101111	161	10100001	211	11010011
012	00001100	062	00111110	112	01110000	162	10100010	212	11010100
013	00001101	063	00111111	113	01110001	163	10100011	213	11010101
014	00001110	064	01000000	114	01110010	164	10100100	214	11010110
015	00001111	065	01000001	115	01110011	165	10100101	215	11010111
016	00010000	066	01000010	116	01110100	166	10100110	216	11011000
017	00010001	067	01000011	117	01110101	167	10100111	217	11011001
018	00010010	068	01000100	118	01110110	168	10101000	218	11011010
019	00010011	069	01000101	119	01110111	169	10101001	219	11011011
020	00010100	070	01000110	120	01111000	170	10101010	220	11011100
021	00010101	071	01000111	121	01111001	171	10101011	221	11011101
022	00010110	072	01001000	122	01111010	172	10101100	222	11011110
023	00010111	073	01001001	123	01111011	173	10101101	223	11011111
024	00011000	074	01001010	124	01111100	174	10101110	224	11100000
025	00011001	075	01001011	125	01111101	175	10101111	225	11100001
026	00011010	076	01001100	126	01111110	176	10110000	226	11100010
027	00011011	077	01001101	127	01111111	177	10110001	227	11100011
028	00011100	078	01001110	128	10000000	178	10110010	228	11100100
029	00011101	079	01001111	129	10000001	179	10110011	229	11100101
030	00011110	080	01010000	130	10000010	180	10110100	230	11100110
031	00011111	081	01010001	131	10000011	181	10110101	231	11100111
032	00100000	082	01010010	132	10000100	182	10110110	232	11101000
033	00100001	083	01010011	133	10000101	183	10110111	233	11101001
034	00100010	084	01010100	134	10000110	184	10111000	234	11101010
035	00100011	085	01010101	135	10000111	185	10111001	235	11101011
036	00100100	086	01010110	136	10001000	186	10111010	236	11101100
037	00100101	087	01010111	137	10001001	187	10111011	237	11101101
038	00100110	088	01011000	138	10001010	188	10111100	238	11101110
039	00100111	089	01011001	139	10001011	189	10111101	239	11101111
040	00101000	090	01011010	140	10001100	190	10111110	240	11110000
041	00101001	091	01011011	141	10001101	191	10111111	241	11110001
042	00101010	092	01011100	142	10001110	192	11000000	242	11110010
043	00101011	093	01011101	143	10001111	193	11000001	243	11110011
044	00101100	094	01011110	144	10010000	194	11000010	244	11110100
045	00101101	095	01011111	145	10010001	195	11000011	245	11110101
046	00101110	096	01100000	146	10010010	196	11000100	246	11110110
047	00101111	097	01100001	147	10010011	197	11000101	247	11110111
048	00110000	098	01100010	148	10010100	198	11000110	248	11111000
049	00110001	099	01100011	149	10010101	199	11000111	249	11111001
050	00110010	100	01100100	150	10010110	200	11001000	250	11111010

## 4) Interval Playback

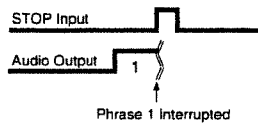
The specified phrase will be played back at fixed intervals. The playback interval is fixed for each connector pin.

- Each phrase 1—9 can be assigned to each 1—9 of the Control I/O Connector pins.
  - \* *Settings made on the AR-2000 will be ignored except for the phrase settings. (p.18)*
  - \* *Repeat playback setting of phrase settings will be ignored.*
- 1—9: Playback the phrase that was specified for the pin on which the control signal was input.



Pin Playback No. : Interval	Pin Playback No. : Interval	Pin Playback No. : Interval
1: 1 sec.	4: 15 sec.	7: 5 min.
2: 5 sec.	5: 30 sec.	8: 15 min.
3: 10 sec.	6: 1 min.	9: 30 min.

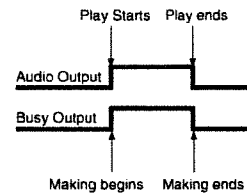
**STOP:** When a control signal is input during phrase playback, phrase playback will be interrupted.



## Control Output

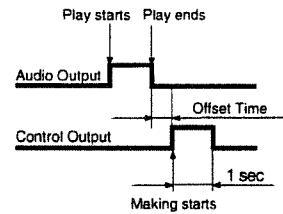
### 1) Busy Output

- The Busy Output outputs a control signal while a phrase is being played, when in the Recording standby mode, and when recording.
- This is a convenient way to turn on an external amplifier etc. during phrase playback.
- The Busy Output is an open collector signal.



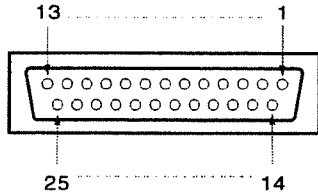
### 2) Control Output

- The Control Output outputs a control signal from the CONT OUT pin after phrase playback.
- This is a convenient way to control external devices after phrase playback.
- The Control Output is an open collector signal, with a make time of 1 second.



\* *Only phrases that were set on the AR-2000 will be valid. (p.18)*  
For details, refer to AR-2000 manual.

## ■ Control I/O specifications



Pin no.	Signal name	
1	1/INC	Control Input
2	2	
3	3/DEC	
4	4	
5	5/EXCHANGE	
6	6	
7	7	
8	8	
9	9/START	
10	STOP	
11	COM	Control Output
12	COM	
13	BUSY OUT	
14	NC	
15	CONT OUT	
16	GND	
17	NC	
18	NC	
19	NC	
20	NC	
21	DC OUT (+5 V, Max :100 mA)	
22	GND	
23	GND	
24	DC IN (+9—24 V, 450 mA)	
25	DC IN (+9—24 V, 450 mA)	

\* Control Input and DC Input Terminal (CONT A) "1,2" are connected in parallel with Control I/O Connector (CONT B) "1,2."

\* When using Program Playback on a PC card created by the AR-2000, use

connectors 1 (INC), 3 (DEC), 5 (EXCHANGE), 9 (START), and 10 (STOP)

\* Do not make any connection to NC pins, since this will cause faulty operation.

## ● DC power supply

• Power can be supplied to the AR-100 from an external power supply unit (DC power supply) as well as from the AC adaptor.

• To supply power from an external power supply unit (DC power), use the Control Input and DC Input Terminal (CONT A) or the Control I/O Connector (CONT B) DC IN and GND pins.

Power supply specifications: DC +9—24 V, 450 mA

• The DC OUT pin of the Control I/O Connector (CONT B) can be used as power supply for a sensor, etc.

\* Never short a power supply pin (21, 24, 25) to the GND pin, since this will damage the unit.

\* When using the DC OUT, be careful not to exceed the maximum rating (100 mA).

### Caution:

For reasons of safety, do not connect the DC IN + pin of the Control Input and DC Input Terminal (CONT A) to metal parts such as the chassis or the Control I/O Connector (CONT B).

# 4. Other function

## ■ Delete Phrase / Delete Card

### Delete Phrase

- This function deletes a phrase.

### Delete Card

- This function erases all phrases from a PC card.
- When you erase a card, all data settings in the card will be initialized.

\* Be aware that this will destroy all data on the PC card.

1. Press the Increment (▲)/Decrement (▼) button to select the phrase number.



2. Hold down the STOP button for at least 5 seconds
  - The message "dEL" will appear in the display. (Delete Phrase)

If you wish to erase a phrase, continue to step 3.



Press the Increment (▲) button to delete card.

- The message "ALL" will appear in the display. (Delete Card)

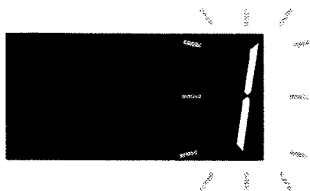


- To switch between delete phrase "dEL" to delete card "ALL", press the Increment (▲) button.

3. Press the ENTER button to delete the phrase or the card.

- If you press the STOP button, the Delete operation will be canceled.

4. When the phrase has been erased, the phrase number in the display will blink.



## ■ Format

- This function formats (initializes) a PC card so that it can be used by the AR-100.
- Cards formatted on the AR-2000 can be used just as they are.

\* It is not possible to use a PC card that has not been formatted in AR-100 or AR-2000.

\* Be aware that this operation will erase all data in the PC card.

1. Insert the PC card that you wish to format into card slot.

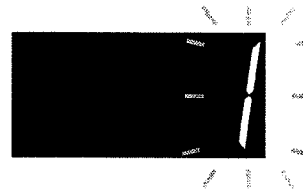
- The message "Fot" will appear in the display.



2. Press the PLAY button, formatting will begin.

- If you press the STOP button, the Format operation will be canceled.

3. When formatting is completed, the message is changed in the display.





# 5. MIDI

In addition to recording and playing back audio data, the AR-100 is also able to record/playback MIDI messages.

- It is also possible to use MIDI to control Phrase Playback.
- MIDI (Musical Instrument Digital Interface) is a world-wide standard that allows electronic musical instruments, sequencers, and computers to exchange musical data such as performance control data and sound selection data, etc.

\* It is not possible to simultaneously playback audio phrases and MIDI phrases.

## ■ MIDI Receive Channel setting

- This sets the MIDI receive channel. This setting is valid for playback by MIDI.

1. While holding down the PLAY button, insert the PC card into the card slot.
2. The MIDI indicator will blink, and the display will indicate the receive channel.



3. Press the Increment (▲)/Decrement (▼) button to select the MIDI receive channel.



- When MIDI messages of any channel will playback phrases, select the message "ALL" in display.



- When MIDI messages will not playback phrases, select the message "OFF" in display.



4. Press the PLAY button to set the specified MIDI receive channel.

- If you press the STOP button, the MIDI receive channel setting will be canceled.

## ■ Playback using MIDI

Note On messages will playback the phrase corresponding to the note number.

### 1) Program Change: 1 (PC=1)

Note number	Phrase number
C -	001
:	:
G 9	128

### 2) Program Change: 2—6 (PC=2—6)

Program Change: 2 (PC=2)

Note number	Phrase number
C -	001
:	:
D#7	100

Program Change: 3 (PC=3)

Note number	Phrase number
C -	101
:	:
D#7	200

Program Change: 4 (PC=4)

Note number	Phrase number
C -	201
:	:
D#7	300

Program Change: 5 (PC=5)

Note number	Phrase number
C -	301
:	:
D#7	400

Program Change: 6 (PC=6)

Note number	Phrase number
C -	401
:	:
D#7	500

\* The settings of the card created by the AR-2000 will be used only for "Playback by card data." (Refer to the AR-2000 operating manual.)

---

## ■ Recording MIDI messages

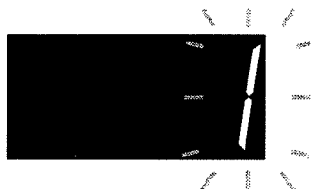
---

- The Time Base is fixed at 192.

\* A card that was created on the AR-2000 will use the settings of the card. (Refer to the AR-2000 operating manual.)

The Time Base setting (called Resolution on some devices) determines the timing precision at which MIDI messages will be recorded. This differs between devices.

1. Connect a MIDI sequencer or MIDI keyboard etc.to the MIDI IN connector of AR-100.
2. Insert a PC card into the card slot.
3. Press the Increment (▲)/Decrement (▼) button to select non-recording phrase.
  - The non-recording phrase number in display is flashed.



\* If you are re-recording over a previously recorded phrase, you should delete the phrase.(p.14)

4. While holding down the STOP button, press the PLAY button. (Recording standby mode)
    - The PLAY indicator is flashed while the recording standby mode.
  5. Hold down the Increment (▲) button for at least 5 seconds.
    - The MIDI indicator is lit.(MIDI recording mode)
- \* Recording will begin when a System Realtime message "Start" (FAH) is received from the connected MIDI device.
6. Press the PLAY button and recording will begin, then input a MIDI message from a MIDI sequencer, MIDI keyboard, etc.
    - The dot in display is flashed while recording.



- \* The Busy Output outputs while recording.
- \* When the card becomes full, recording will stop automatically.
  - The MEMORY FULL indicator tells how much recording time is left.  
When 90% of the recording capacity has been used, the MEMORY FULL indicator will blink. When 100% has been used, the indicator will light.
7. Press the STOP button and recording will end.
- \* Recording will stop when a System Realtime message "Stop" (FBH) is received from the connected MIDI device.

# 6. Appendix

## ■ Mode switch setting

The eight mode switches are provided in rear panel. Various applications are possible by changing the settings of the MODE switches.

Each switch is OFF when in the upward position, and ON when in the downward position. Use a pointed object to change the ON/OFF settings of the MODE switches.

When the AR-100 is shipped from the factory, all switches will be OFF as shown below.



### ● How to use the mode switch

SW	Purpose	OFF	ON															
SW1 SW2	RDAC-GRADE settings	<table border="1"> <thead> <tr> <th>SW1</th> <th>SW2</th> <th>RDAC-GRADE</th> </tr> </thead> <tbody> <tr> <td>ON</td> <td>OFF</td> <td>LONG2</td> </tr> <tr> <td>OFF</td> <td>OFF</td> <td>LONG1</td> </tr> <tr> <td>OFF</td> <td>ON</td> <td>STANDARD</td> </tr> <tr> <td>ON</td> <td>ON</td> <td>HIGH</td> </tr> </tbody> </table>		SW1	SW2	RDAC-GRADE	ON	OFF	LONG2	OFF	OFF	LONG1	OFF	ON	STANDARD	ON	ON	HIGH
SW1	SW2	RDAC-GRADE																
ON	OFF	LONG2																
OFF	OFF	LONG1																
OFF	ON	STANDARD																
ON	ON	HIGH																
SW3	RDAC-Mode settings	Mode1	Mode2															
SW4	Recording Type settings	Mono	Stereo															
SW5 SW6	Playback Mode settings	<table border="1"> <thead> <tr> <th>SW5</th> <th>SW6</th> <th>Playback Mode</th> </tr> </thead> <tbody> <tr> <td>OFF</td> <td>OFF</td> <td>Playback by card data</td> </tr> <tr> <td>ON</td> <td>OFF</td> <td>Direct Playback (Last-in)</td> </tr> <tr> <td>OFF</td> <td>ON</td> <td>Binary Playback</td> </tr> <tr> <td>ON</td> <td>ON</td> <td>Interval Playback</td> </tr> </tbody> </table>		SW5	SW6	Playback Mode	OFF	OFF	Playback by card data	ON	OFF	Direct Playback (Last-in)	OFF	ON	Binary Playback	ON	ON	Interval Playback
SW5	SW6	Playback Mode																
OFF	OFF	Playback by card data																
ON	OFF	Direct Playback (Last-in)																
OFF	ON	Binary Playback																
ON	ON	Interval Playback																
SW7	Switch Protect (*)	Protect OFF	Protect ON															
SW8	not in use	Always set to the OFF position																

(\*) This will prevent AR-100's settings from incorrect operation.  
 If Switch Protect is ON, it will not be possible to operate the unit from the front panel buttons (such as PLAY, STOP, ▼, ▲).  
 Use this setting to prevent accidental operation when a button is pressed.

#### Caution:

If SW7 (Switch Protect) is ON, recording and manual playback etc. will not be possible. When you wish to operate the unit using the panel buttons, be sure to turn Switch Protect OFF.

## ■ Phrase data for recording

When a piece of Phrase data recorded by the AR-100, the settings of data on the card will be as follows.

If you will be using the card on the AR-2000, refer to this list.

### Phrase settings

Playback Volume:	100
Delay time:	OFF
Control output:	OFF
Repeat playback:	OFF
Phrase name:	MESSAGE + Phrase number
Tempo:	120 (MIDI phrase only)

## ■ Settings after formatting

When a card is formatted by the AR-100, the settings of the card will be as follows.

If you will be using the card on the AR-2000, refer to this list.

### Recording settings

RDAC-GRADE:	STANDARD
RDAC-Mode:	Mode2
Recording setting:	Stereo
Trigger recording:	OFF
Time base:	192 (MIDI phrase only)

### Control input settings

Program playback:	Program playback 1: 1-100 2-5: Unsetting
Direct playback:	CH1-CH16: 1-16
Control input select:	Direct playback(Normal)
Binary playback input trigger:	Level

### MIDI settings

Recording MIDI messages:	OFF
MIDI note:	C- <-> G9(1-128)
MIDI receive channel:	OFF
MIDI OUT:	OUT
MIDI note trigger:	Trigger
DEVICE ID:	1

### System settings

Line input select:	OFF
RS-232C/422A baud rate:	9600
Channel playback mode:	OFF
Recorded phrase protect mode:	OFF

### ETC. settings

Recording phrase:	250
Linear recording:	OFF

## ■ AR-2000 settings that can be used

The following AR-2000 settings can be used by the AR-100. Refer to this list if you will be using a card created by the AR-2000.

Setting	Playback by card	Other playback
Phrase settings(*1)	O	O(*2)
Program playback settings	O	X
Direct playback setting	O	X
Control input select setting	O(*3)	X
Binary playback input trigger setting	O	X
Channel playback mode setting	O	X
MIDI notes setting	O	X
MIDI receive channel setting	O	O
MIDI note trigger	O	X
Device ID setting	O	X
Recording phrase	O	O

(\*1) The phrase name will not be displayed on the AR-100.

(\*2) Repeat playback setting of phrase settings will be ignored at Interval Playback.

(\*3) For binary playback, up to 250 phrases can be played back.

# Error messages

If an incorrect operation is attempted or execution is not possible, an error message will appear in the display.

Note the message that appears, and take the appropriate action.

.....  
Display:



Action: Consult a nearby Roland Service Station.

.....  
Display:



Situation: It is possible that the data in the PC card or the PC card itself has been damaged.

Action: Erase all phrases from PC card (Delete Card:p.14). If delete card is not possible, or if the same message appears after the card has been delete card, it may be that the PC card is malfunctioning. Use a different PC card

.....  
Display:



Situation: The card is of a type which the AR-100 is not able to use.

Action: Refer to the section "Applicable PC cards" on page 22 and use an appropriate PC card.

.....  
Display:



Situation: No more data can be recorded in the card.

Action: Either delete unnecessary phrases (p.14), or use a different card.

.....  
Display:



Situation: Either the phrase data is damaged, or the AR-100 is not able to handle the phrase.

Action: Check the phrase for which the message was displayed.

.....  
Display:



Situation: The write protect switch on the PC card is set to the ON position.

Action: Refer to the manual for the PC card, and set the write protect switch to the OFF position.

.....  
Display:



Situation: The backup battery in the PC card has run down.

Action: Refer to the manual for the PC card and replace the battery.

.....  
Display:



Situation: A large amount of MIDI data was received in a short time, and could not be processed.

Action: Change the way in which MIDI data is being transmitted.

.....  
Display:



Situation: Once an Active Sensing message was received, 300 msec elapsed without any message being received.

Action: Check the MIDI cable connect or turn off.

**MIDI Implementation Chart**

Media Player Section

Function ...		Transmitted	Recognized	Remarks
Basic Channel	Default Changed	o x	1—16 1—16	Memorized
Mode	Default Message Altered	x o *****	Mode 3, 1 x	Memorized
Note Number :	True Voice	0—127 *****	0—127	
Velocity	Note ON Note OFF	o o	x x	
After Touch	Key's Ch's	o o	x x	
Pitch Bend		o	x	
Control Change  0—119		o	x	
Program Change :	True #	o *****	o 0—10, 127	Program number : 1—11, 128
System Exclusive		o	o	
System Common	: Song Pos : Song Sel : Tune	x x x	x x x	
System Real Time	: Clock : Commands	o o	x x	
Aux Messages	: All Sounds OFF : Reset All Controllers : Local ON/OFF : All Notes OFF : Active Sensing : System Reset	o o x o x x	x x x x x x	
Notes				

Mode 1 : OMNI ON, POLY  
Mode 3 : OMNI OFF, POLY

Mode 2 : OMNI ON, MONO  
Mode 4 : OMNI OFF, MONO

o : Yes  
x : No

### MIDI Implementation Chart

#### MIDI Recording Section

Function ...	Transmitted	Recognized	Remarks
Basic Channel Default Changed	x x	all channels x	not Basic channel
Mode Default Message Altered	x x *****	x o	
Note Number : True Voice	x *****	0—127 0—127	
Velocity Note ON Note OFF	x x	o o	
After Touch Key's Ch's	x x	o o	
Pitch Bend	x	o	
Control Change  0—119	x	o	
Program Change : True #	x *****	o 0—127	
System Exclusive	x	o	
System Common : Song Pos : Song Sel : Tune	x x x	x x x	
System Real Time : Clock : Commands	x x	x o	
Aux Messages : All Sounds OFF : Reset All Controllers : Local ON/OFF : All Notes OFF : Active Sensing : System Reset	x x x x x x	o o o o ( 123—127 ) o x	
Notes			

Mode 1 : OMNI ON, POLY  
Mode 3 : OMNI OFF, POLY

Mode 2 : OMNI ON, MONO  
Mode 4 : OMNI OFF, MONO

o : Yes  
x : No

# Specifications

## AR-100: Audio Recorder

### ●Recording Format

RDAC (Roland Digital Audio Coding)

### ●RDAC-GRADE (Sampling rate)

#### ●Record / Playback

HIGH ( 44.1[kHz])  
STANDARD ( 32 [kHz])  
LONG1 ( 22.05[kHz])  
LONG2 ( 16 [kHz])

#### ●Playback only

ANNOUNCE ( 8 [kHz])

### ●RDAC-Mode (Recording mode)

#### ●Record / Playback

Mode 1: Extended recording time  
Mode 2: Normal recording time

#### ●Playback only

Linear: High quality recording  
(16-bit PCM recording, only for specified PC cards.)

### ●MIDI data record / playback

You can record and playback MIDI data.

\* MIDI stands for Musical Instrument Digital Interface. MIDI is a world-wide standard, and performance data of one device can be transmitted to another device.

### ●Recording media

PC card (PC Card Standard (1995) compatible)

### ●Applicable PC cards

ATA FLASH PC cards:  
Roland ATA Flash PC Cards PM series  
SanDisk Inc. FLASH Disk SDP5, SDP5A, SDP3B equivalent

### ●Phrase types

Audio phrases (stereo/mono)  
MIDI phrases

\* In the AR-100, a "phrase" refers to a piece of recorded data

### ●Number of phrases

#### ●Card made on the AR-100

Maximum 250 Phrases

#### ●Card made on the AR-2000

Maximum 500 phrases

### ●Recording time

RDAC-Mode \ RDAC-GRADE	RDAC-Mode 1	RDAC-Mode 2
HIGH	Approx. 31min. 37sec.	Approx. 21min. 05sec.
STANDARD	Approx. 43min. 34sec.	Approx. 29min. 03sec.
LONG 1	Approx. 1hour 03min. 16sec.	Approx. 42min. 10sec.
LONG 2	Approx. 1hour 27min. 09sec.	Approx. 58min. 06sec.

\* 40MBytes PC card (Monaural)

Trademarks and registered trademarks appearing in the text are the property of the respective owner.

### ● Playback methods

#### ●Card made on the AR-100

Direct playback: 9 phrases, 2 modes (Normal, Last-In)  
Interval playback\*: 9 phrases  
Binary playback\*: 250 phrases  
MIDI playback: 250 phrases

#### ●Card made on the AR-2000

Direct playback: 9 phrases, 3 modes (Normal, Last-In, Sequence)  
Interval playback: 9 phrases  
Binary playback: 250 phrases  
Program playback\*: 100 phrases, 5 patterns  
MIDI playback: 500 phrases

\* Binary playback: Method of playback whereby phrases are specified using binary code.

\* Interval playback: Method of continuance phrase playback that occurs in predetermined interval time.

\* Program playback: Method of phrase playback that occurs in predetermined order.

### ● Inputs

(\* 0 dBm=0.775Vrms)  
Input Sensitivity: - 16 dBm  
Nominal Input Level: - 10 dBm  
Input Impedance: 18 k-ohm  
Recommended Source Impedance: 2 k-ohm or less

### ● Outputs

(\* 0 dBm=0.775Vrms)  
Nominal Output Level: - 10 dBm  
Output Impedance: 300 ohm  
Recommended load Impedance: 600 ohm or more

### ● Phones

Recommended load Impedance: 30 ohm or more

### ● Control Inputs

Trigger Signal Format: On, Off (Open, Close), Pulse width: 20 msec or more

#### Control Inputs Terminal:

Direct Playback (Last-In, 9 Channels, STOP)  
Interval Playback (9 Channels, STOP)  
Binary Playback (Phrase select (8 bits), START, STOP)  
Program Playback\* (START, STOP, INC, DEC, EXCHANGE)

\* Program playback: Use the card made on the AR-2000

### ● Control Outputs

Signal Format: On, Off (Open, Close)  
Contact Capacity: DC 24 V, 30 mA  
Control Outputs Terminal:  
Busy Output (During phrase playback)  
Control Output\*

\* Control Output: Use the card made on the AR-2000.

### ● PC card slot

Type I, II x 1 slot

### ● Display

7 segments, 3 characters (LED)

### ● Indicators

MIDI Indicator  
CLIP Indicator  
PLAY Indicator  
MEMORY FULL Indicator

### ● Controllers

PLAY Button  
STOP Button  
INCrement (▲) Button  
DECReament (▼) Button  
INPUT VOLUME Knob (Rear panel)  
MODE Switch (Rear panel)



- Connectors

- Phones (Stereo miniature phone jack)
- Input Jacks (RCA phone Jacks;L/MONO, R)
- Output Jacks (RCA phone Jacks;L/MONO, R)
- MIDI Jacks (5-pin DIN connector; IN, OUT)
- Control Input and DC Input Terminal (CONT A)  
(5 pin Terminal Block with M3 bolts)
- Control I/O Connector (CONT B)  
(DB-25 Connector)

- Power Supply

- DC 9 V (AC Adaptor)
- DC 9 V — DC 24 V (CONT A , CONT B )

- Current Draw

- 450 mA

- Dimensions

- 218 (W) x 245 (D) x 44 (H) mm
- 8-5/8(W)x 9-11/16 (D) x 1-3/4 (H) inches

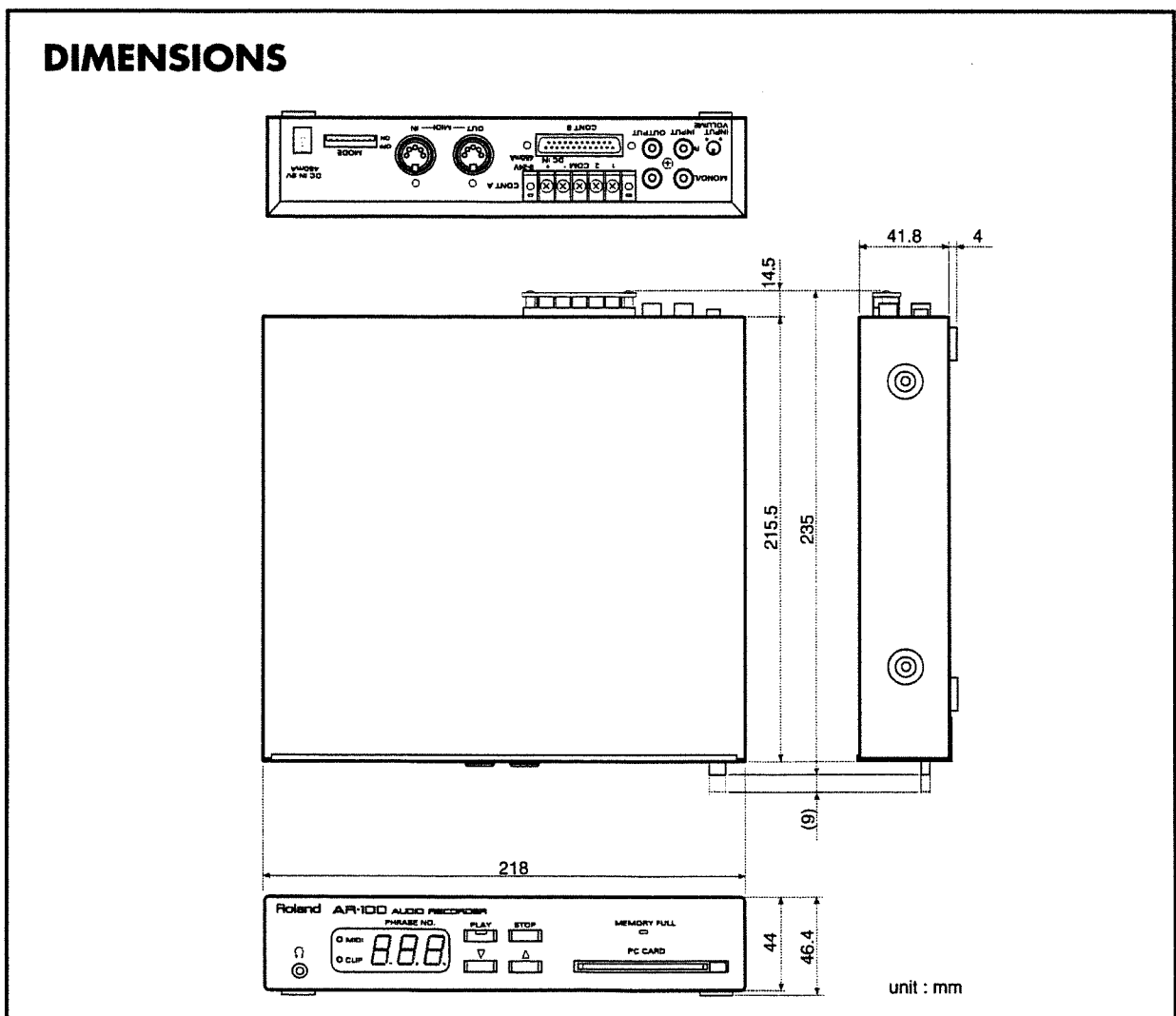
- Weight

- 1.2 kg
- 2 lbs 11 oz

- Supplied Accessories

- Owner's Manual
- Card Protector (with screws)
- AC adaptor

\* The specifications for this product are subject to change without prior notice.



# Index

## [A]

AR-2000 .....9, 10, 12, 13, 14, 15, 16, 18

## [B]

Binary playback input trigger .....18  
Busy Output .....12

## [C]

Card .....5  
    Binary playback .....10, 17  
    Binary playback input trigger .....18  
    Card Protector .....6  
    Delete Card .....14  
    Direct Playback .....10, 17, 18  
    Format .....14  
    Interval Playback .....12, 17  
    Playback by card data .....9, 17  
Card slot .....4, 5  
Clip indicator .....4, 7  
CONT A .....4, 9, 13  
CONT B .....4, 9, 13  
Control Input .....9  
    Binary playback .....10, 17  
    Direct playback .....10, 17, 18  
    Interval playback .....12, 17  
    Playback by card data .....9, 17  
Control Output .....12  
    Busy Output .....12  
    Control Output .....12

## [D]

DC power supply .....13  
Decrement (▼) button .....4, 7, 14, 15, 16  
Delete Card .....14  
Delete phrase .....14  
DIMENSIONS .....23

## [E]

Eject button .....4, 5  
Error messages .....19

## [F]

Format .....14

## [I]

Increment (▲) button .....4, 7, 14, 15, 16  
Input jack .....4, 6, 8  
Input volume .....4, 7

## [M]

Memory Full indicator .....4, 7, 16  
MIDI .....15, 16  
    Playback .....15  
    Receive channel .....15  
    Recording .....16  
    Time base .....16  
MIDI Implementation Chart .....20, 21  
MIDI indicator .....4, 15, 16  
Mode switch .....4, 6, 8, 9, 17

## [O]

Output jack .....4, 6, 7, 8

## [P]

PC card .....1, 5  
Phones jack .....4, 6, 7  
Phrase .....6  
    Delete phrase .....14  
    MIDI phrase .....15  
    Phrase number .....10, 11  
    Phrase settings .....18  
Play button .....4, 7, 14, 15, 16  
Playback .....10, 17  
    Binary playback .....10, 17  
    Direct playback .....10, 17, 18  
    Interval playback .....12, 17  
    Manual playback .....7  
    MIDI playback .....15  
    Playback by card data .....9, 17  
Playback time .....5  
Play indicator .....4, 7, 16

## [R]

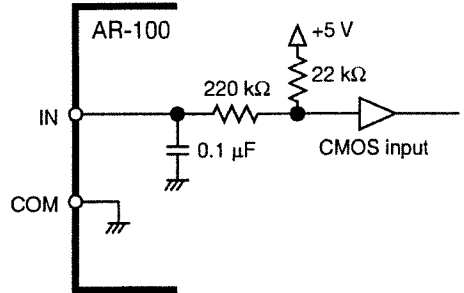
Rack mounting .....6  
RDAC-GRADE .....8  
RDAC-Mode .....8  
Recording Type .....8  
Recording .....7, 8  
    Audio .....7, 8  
    MIDI .....16  
Recording settings .....8  
    RDAC-GRADE .....8  
    RDAC-Mode .....8  
    Recording Type .....8  
Repeat playback .....9, 10

## [S]

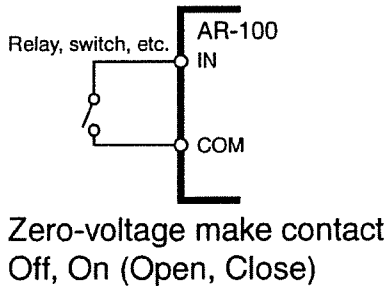
Setup .....6  
Stop button .....4, 7, 14, 15, 16

# AR-100 Control I/O Circuit

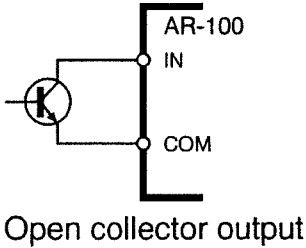
## Control Input Circuit Diagram



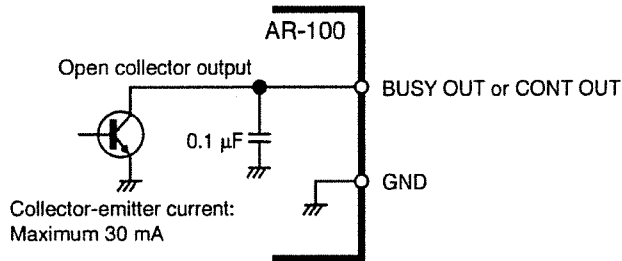
### Connection Example 1



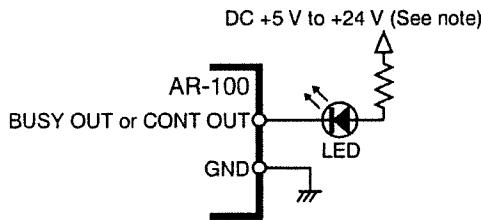
### Connection Example 2



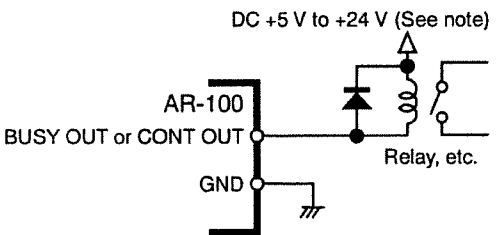
## Control Output Circuit Diagram



### Connection Example 1



### Connection Example 2

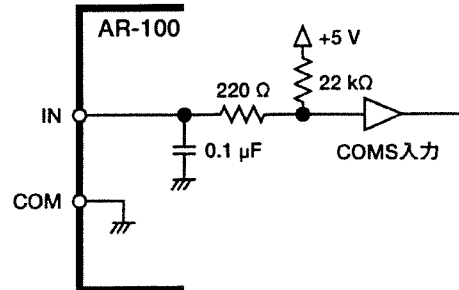


The maximum contact capacity for control output is DC 24 V, 30 mA. Be careful not to exceed these values.

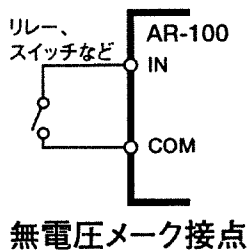
Note: The DC OUT pin can also be used as power supply. Be careful not to exceed the maximum rated current (100 mA).

# AR-100 制御入出力回路

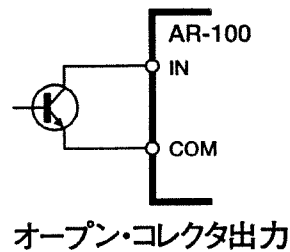
## ■制御入力回路図



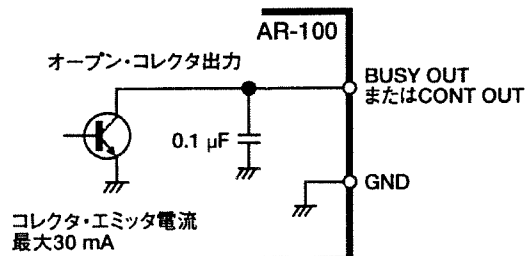
接続例1



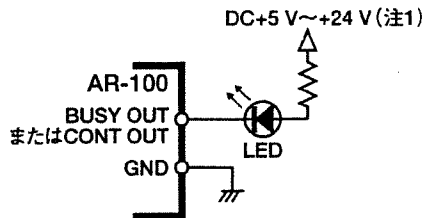
接続例2



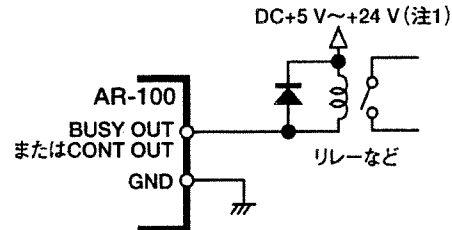
## ■制御出力回路図



接続例1



接続例2



制御出力の接点容量は、最大DC24V、30mAです。この値を越えないようご注意ください。

注1： DC OUT端子を利用することもできます。最大定格電流（100mA）を越えないようご注意ください。

## Information

When you need repair service, call your nearest Roland Service Center or authorized Roland distributor in your country as shown below.

### AFRICA

#### EGYPT

**Al Fanny Trading Office**  
P.O. Box 2904,  
El Horrieh Heliopolos, Cairo,  
EGYPT  
TEL: (02) 4185531

#### REUNION

**Maison FO - YAM Marcel**  
25 Rue Jules Mermet  
Chaudron - BP79 97491  
Ste Clotilde REUNION  
TEL: 28 29 16

#### SOUTH AFRICA

##### That Other Music Shop (PTY) Ltd.

11 Melle Street (Cnr Melle and  
Juta Street)  
Braamfontein 2001  
Republic of SOUTH AFRICA  
TEL: (011) 403 4105

**Paul Bothner (PTY) Ltd.**  
17 Werdmuller Centre Claremont  
7700  
Republic of SOUTH AFRICA

P.O. Box 23032  
Claremont, Cape Town  
SOUTH AFRICA, 7735  
TEL: (021) 64 4030

### ASIA

#### CHINA

**Beijing Xinghai Musical  
Instruments Co., Ltd.**  
6 Huangmunchang Chao Yang  
District, Beijing, CHINA  
TEL: (010) 6774 7491

#### HONG KONG

**Tom Lee Music Co., Ltd.  
Service Division**  
22-32 Pun Shan Street, Tsuen  
Wan, New Territories,  
HONG KONG  
TEL: 2415 0911

#### INDIA

**Rivera Digitec (India) Pvt. Ltd.**  
409, Nirman Kendra Mahalaxmi  
Flats Compound Off. Dr. Edwin  
Moses Road, Mumbai-400011,  
INDIA  
TEL: (022) 498 3079

#### INDONESIA

**PT Citra Inti Rama**  
Jl. Cideng Timur No. 15J-150  
Jakarta Pusat  
INDONESIA  
TEL: (021) 6324170

#### KOREA

**Cosmos Corporation  
Service Station**  
261 2nd Floor Nak-Won Arcade  
Jong-Ro ku, Seoul, KOREA  
TEL: (02) 742 8844

#### MALAYSIA

**Bentley Music SDN BHD**  
140 & 142, Jalan Bukit Bintang  
55100 Kuala Lumpur, MALAYSIA  
TEL: (03) 2443333

#### PHILIPPINES

**G.A. Yumpangco & Co. Inc.**  
339 Gil J. Puyat Avenue  
Makati, Metro Manila 1200,  
PHILIPPINES  
TEL: (02) 899 9801

#### SINGAPORE

**Swee Lee Company**  
150 Sims Drive,  
SINGAPORE 387381  
TEL: 748-1669

#### CRISTOFORI MUSIC PTE

**LTD**  
Blk 3014, Bedok Industrial Park E,  
#02-2148, SINGAPORE 489980  
TEL: 243 9555

#### TAIWAN

**ROLAND TAIWAN  
ENTERPRISE CO., LTD.**  
Room 5, 9th. No. 112 Chung Shan  
N. Road Sec. 2, Taipei, TAIWAN,  
R.O.C.  
TEL: (02) 2561 3339

#### THAILAND

**Theera Music Co., Ltd.**  
330 Verg Nakorn Kasem, Soi 2,  
Bangkok 10100, THAILAND  
TEL: (02) 2248821

#### VIETNAM

**Saigon Music**  
138 Tran Quang Khai St.,  
District 1  
Ho Chi Minh City  
VIETNAM  
TEL: (08) 844-4068

### AUSTRALIA/ NEW ZEALAND

#### AUSTRALIA

**Roland Corporation  
Australia Pty., Ltd.**  
38 Campbell Avenue  
Dee Why West, NSW 2099  
AUSTRALIA  
TEL: (02) 9982 8266

#### NEW ZEALAND

**Roland Corporation (NZ) Ltd.**  
97 Mt. Eden Road, Mt. Eden,  
Auckland 3, NEW ZEALAND  
TEL: (09) 3098 715

### CENTRAL/LATIN AMERICA

#### ARGENTINA

**Instrumentos Musicales S.A.**  
Florida 656 2nd Floor  
Office Number 206A  
Buenos Aires  
ARGENTINA, CP1005  
TEL: (54-1) 4- 393-6057

#### BRAZIL

**Roland Brasil Ltda.**  
R. Coronel Octaviano da Silveira  
203 05522-010  
Sao Paulo BRAZIL  
TEL: (011) 3743 9377

#### CHILE

**Comercial Fancy S.A.**  
Avenida Rancagua #0330  
Providencia Santiago, CHILE  
TEL: 56-2-373-9100

#### EL SALVADOR

**OMNI MUSIC**  
75 Avenida Notre y Alameda  
Juan Pablo 2 No. 4010  
San Salvador, EL SALVADOR  
TEL: (503) 262-0788

#### MEXICO

**Casa Veerkamp, s.a. de c.v.**  
Av. Toluca No. 323 Col. Olivar de  
los Padres 01780 Mexico D.F.  
MEXICO  
TEL: (525) 668 04 80

**La Casa Wagner de  
Guadalajara s.a. de c.v.**  
Av. Corona No. 202 S.J.  
Guadalajara, Jalisco Mexico  
C.P. 44100 MEXICO  
TEL: (3) 613 1414

#### PANAMA

**Productos Superiores, S.A.**  
Apartado 655 - Panama 1  
REP. DE PANAMA  
TEL: (507) 270-2200

#### URUGUAY

**Todo Musica**  
Cuareim 1488, Montevideo,  
URUGUAY  
TEL: 5982-924-2335

#### VENEZUELA

**Musiland Digital C.A.**  
Av. Francisco de Miranda,  
Centro Parque de Cristal, Nivel  
C2 Local 20 Caracas  
VENEZUELA  
TEL: (02) 285 9218

### EUROPE

#### AUSTRIA

**Roland Austria GES.M.B.H.**  
Siemensstrasse 4, P.O. Box 74,  
A-6063 RUM, AUSTRIA  
TEL: (0512) 26 44 260

#### BELGIUM/HOLLAND/ LUXEMBOURG

**Roland Benelux N. V.**  
Houtstraat 3 B-2260 Oevel  
(Westerlo) BELGIUM  
TEL: (014) 575811

#### DENMARK

**Roland Scandinavia A/S**  
Nordhavnsvej 7, Postbox 880  
DK-2100 Copenhagen  
DENMARK  
TEL: (039)16 6200

#### FRANCE

**Roland France SA**  
4, Rue Paul Henri SPAAK  
Parc de l'Esplanade F 77 462 St.  
Thibault Lagny Cedex FRANCE  
TEL: 01 600 73 500

#### FINLAND

**Roland Scandinavia As,  
Filial Finland**  
Lauttasaarentie 54 B  
Fin-00201 Helsinki, FINLAND  
TEL: (9) 682 4020

#### GERMANY

**Roland Elektronische  
Musikinstrumente  
Handelsgesellschaft mbH.**  
Oststrasse 96, 22844 Norderstedt,  
GERMANY  
TEL: (040) 52 60090

#### GREECE

**STOLLAS S.A.**  
Music Sound Light  
155, New National Road  
26422 Patras, GREECE  
TEL: 061-435400

#### HUNGARY

**Intermusica Ltd.**  
Warehouse Area 'DEPO' Pf.83  
H-2046 Torokbalint, HUNGARY  
TEL: (23) 511011

#### IRELAND

**Roland Ireland**  
Audio House, Belmont Court,  
Donnybrook, Dublin 4,  
Republic of IRELAND  
TEL: (01) 2603501

#### ITALY

**Roland Italy S. p. A.**  
Viale delle Industrie, 8  
20020 Arrese Milano, ITALY  
TEL: (02) 937-78300

#### NORWAY

**Roland Scandinavia Avd.  
Kontor Norge**  
Lilleakerveien 2 Postboks 95  
Lilleaker N-0216 Oslo  
NORWAY  
TEL: 273 0074

#### POLAND

**P. P. H. Brzostowicz**  
UL. Gibraltarska 4,  
PL-03664 Warszawa POLAND  
TEL: (022) 679 44 19

#### PORTUGAL

**Tecnologias Musica e Audio,  
Roland Portugal, S.A.**  
RUA SANTA CATARINA  
131 - 4000 Porto -PORTUGAL  
TEL: (02) 208 44 56

#### ROMANIA

**FBS LINES**  
Plata Libertatii 1,  
RO-4200 Cheorgheni  
TEL: (066) 164-609

#### RUSSIA

**Slami Music Company**  
Sadovaya-Triumfalnaya st., 16  
103006 Moscow, RUSSIA  
TEL: 095 209 2193

#### SPAIN

**Roland Electronics  
de España, S. A.**  
Calle Bolivia 239 08020 Barcelona,  
SPAIN  
TEL: (93) 308 1000

#### SWEDEN

**Roland Scandinavia A/S  
SWEDISH SALES OFFICE**  
Danvik Center 28, 2 tr.  
S-131 30 Nacka SWEDEN  
TEL: (08) 702 0020

#### SWITZERLAND

**Roland (Switzerland) AG  
Musitronic AG**  
Gerberstrasse 5, CH-4410 Liestal,  
SWITZERLAND  
TEL: (061) 921 1615

#### UKRAINE

**TIC-TAC**  
Mira Str. 19/108  
P.O. Box 180  
295400 Mukachevo, UKRAINE  
TEL: (03131) 414-40

#### UNITED KINGDOM

**Roland (U.K.) Ltd.**  
Atlantic Close, Swansea  
Enterprise Park SWANSEA  
SA7 9FJ,  
UNITED KINGDOM  
TEL: (01792) 700139

### MIDDLE EAST

#### BAHRAIN

**Moon Stores**  
Bab Al Bahrain Road,  
P.O. Box 20077  
State of BAHRAIN  
TEL: 211 005

#### CYPRUS

**Radex Sound Equipment Ltd.**  
17 Diagorou St., P.O. Box 2046,  
Nicosia CYPRUS  
TEL: (02) 453 426

#### ISRAEL

**Halilit P. Greenspoon &  
Sons Ltd.**  
8 Retzif Fa'aliya Hashnaya St.  
Tel-Aviv-Yahd ISRAEL  
TEL: (03) 6823666

#### JORDAN

**AMMAN Trading Agency**  
Prince Mohammed St. P.O. Box  
825 Amman 11118 JORDAN  
TEL: (06) 4641200

#### KUWAIT

**Easa Husain Al-Yousifi**  
P.O. Box 126 Safat 13002  
KUWAIT  
TEL: 5719499

#### LEBANON

**A. Chahine & Fils**  
P.O. Box 16-5857 Gergi Zeidan St.  
Chahine Building, Achrafieh  
Beirut, LEBANON  
TEL: (01) 335799

#### OMAN

**OHI Electronics & Trading  
Co. LLC**  
P.O. Box 889 Muscat  
Sultanate of OMAN  
TEL: 959085

#### QATAR

**Badie Studio & Stores**  
P.O. Box 62,  
DOHA QATAR  
TEL: 423554

#### SAUDI ARABIA

**aDawiah Universal  
Electronics APL**  
P.O. Box 2154 ALKHOBAR 31952,  
SAUDI ARABIA  
TEL: (03) 898 2081

#### SYRIA

**Technical Light & Sound  
Center**  
Khaled Ibn Al Walid St.  
P.O. Box 13520  
Damascus - SYRIA  
TEL: (011) 2235 384

#### TURKEY

**Barkat Muzik aletleri ithalat  
ve ihracat limited ireketi**  
Siraselviler Cad. Billurcu Sok.  
Mucadelle Cikmeze No. 11-13  
Taksim, Istanbul, TURKEY  
TEL: (0212) 2499324

#### U.A.E.

**Zak Electronics & Musical  
Instruments Co.**  
Zabeel Road, Al Sherouq Bldg.,  
No. 14, Grand Floor DUBAI  
U.A.E.  
P.O. Box 8050 DUBAI, U.A.E.  
TEL: (04) 360715

### NORTH AMERICA

#### CANADA

**Roland Canada Music Ltd.  
(Head Office)**  
5480 Parkwood Way Richmond  
B. C., V6V 2M4 CANADA  
TEL: (0604) 270 6626

#### Roland Canada Music Ltd.

**(Toronto Office)**  
Unit 2, 109 Woodbine Downs  
Blvd, Etobicoke, ON  
M9W 6Y1 CANADA  
TEL: (0416) 213 9707

#### U. S. A.

**Roland Corporation U.S.**  
5100 S. Eastern Avenue  
Los Angeles, CA 90040-2938,  
U. S. A.  
TEL: (323) 890 3700

 Roland®

71452145



UPC

71452145



18981