



bome software

everything sounds.

Bome's Midi Translator

Tutorial: MT Pro with Ableton

Notes:

1. These help documents were created for the Windows version of Midi Translator. The concepts are the same, but the screenshots look a little different. Sorry for the inconvenience.
2. This is a tutorial made by a user of an older version of Midi Translator Pro. The screenshots will look slightly different, but it will work just the same for current versions of Midi Translator.

1 Introduction

Like many people, I was blown away by the Kid Beyond video on the Ableton site, and seeing as I've been using Ableton for years I thought I'd give it a whirl and try and duplicate the elegant simplicity of his rig. The challenge was this: to keep to an absolute minimum the need for button (or pedal) presses, to keep everything automatically synced and to remove the need for a screen. As an added bonus, I want to be able to save everything I record, and to resample whatever is looping in the same easy way as I record layers.

The rig I've developed has 8 buttons, for 8 tracks. Hit 1 to start recording on track one at the start of the next bar. Hitting 2 will start recording on track 2 at start of the next bar while track 1 continues playing back what you've just recorded. You can continue this for any track, simply hit the next destination, and at the end of the bar, you'll start recording on the new destination track. Hitting the same button as the track you are recording will stop the recording process, and leave all the clips you just recorded looping cleanly.

Doing this on channel 8 is different. Channel 8 will resample the result, stop all the other clips, insert a new layer, copy the stopped clips in to save later, and empty out all the recording slots so you can continue adding stuff in. I usually have a high pass and low pass filter ready on this channel to allow me to remove the tops or bottoms to give some sonic space for more layering.

It would be pretty poor form of me to brag about what a great setup I've got without showing you **exactly** how to do it yourself, so that's what I'll do next. Hopefully you'll learn some useful tips and tricks along the way. With some of the techniques used here you can really take control of ableton and make live setups that finally free you from the dreaded mouse, bane of electronic musicians everywhere. If you take everything that's cool about a guy on stage with a load of noise screaming out of an electric guitar, and then try and imagine its polar opposite, it's the sight of a mouse and a laptop.

2 Preparation

You will need:

- **Ableton Live** (obviously)
- **Bome's Midi Translator Pro or Author**
(free for 30 days , but once you learn how to use it in this tutorial you'll want it all year round) – you can use the Classic version if you like, but you will not be able to completely automate the cleanup macro that I use for the resampling without assigning an extra button and remembering to press it after the bar ends. Timers in MT Pro/Author are incredibly useful tools.
You can also use the free MT Player, but you won't be able to adapt the preset to your MIDI (foot) controller.
- An **external midi controller** with a free key or button per track.
I developed this using a Tascam US-428 (in 'four control banks' mode) so my 8 track buttons send the Midi notes E0 - B0. In the following setup screens, whenever you see [Note On #1:F#0, vel 127] replace it with whatever midi information your midi controller squirts out. I have also developed a version of this rig specifically for the US-428 which controls the on-board LEDs to show you which channel is recording (flashing red) and which have been recorded to already (steady red). I will release a further tutorial at a later date if there is demand.
- A modicum of **technical knowledge** about your PC and MIDI is required.
I'll document in reasonable detail, but If I write so a chimp could do it, it will make for very boring reading...

3 The Ableton Setup

Preparation:

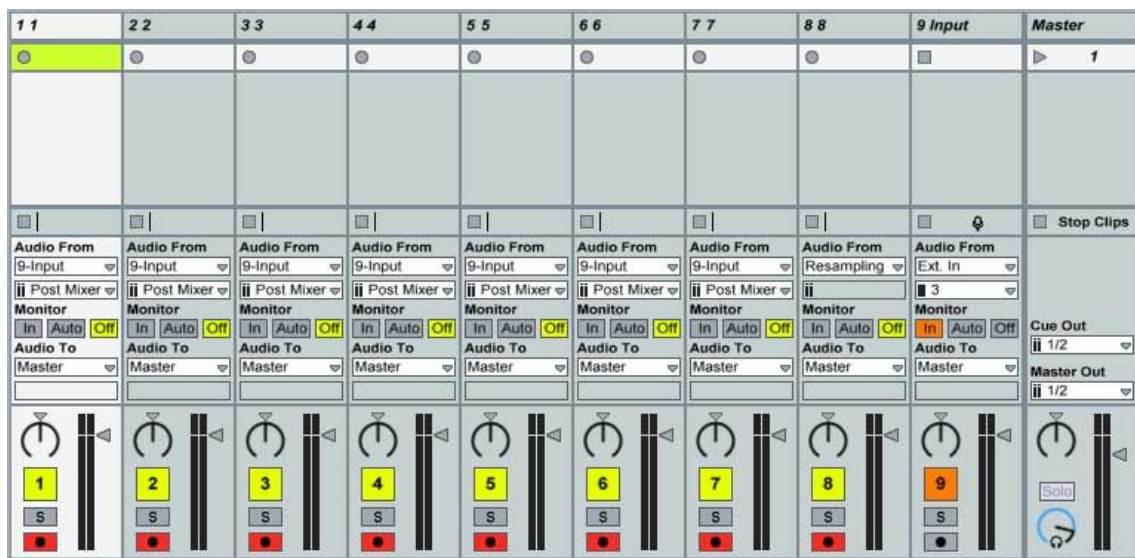
Important: Turn off the Options/Computer MIDI Keyboard, as it will prevent you from accessing keys you need to use for automation.

In Preferences/Record Warp Launch and make sure Exclusive/Arm is deselected as we will have to arm 8 tracks at once.

Set quantize to 1 bar

Creating the Ableton Rig:

We're going to create 9 audio tracks and set them up as follows:



Create 9 audio tracks & name them. Track 9 will be used as an input strip.

For tracks 1-7:

Choose '9-Input' as the input source, turn monitoring to 'off' and arm for recording.

Track 8:

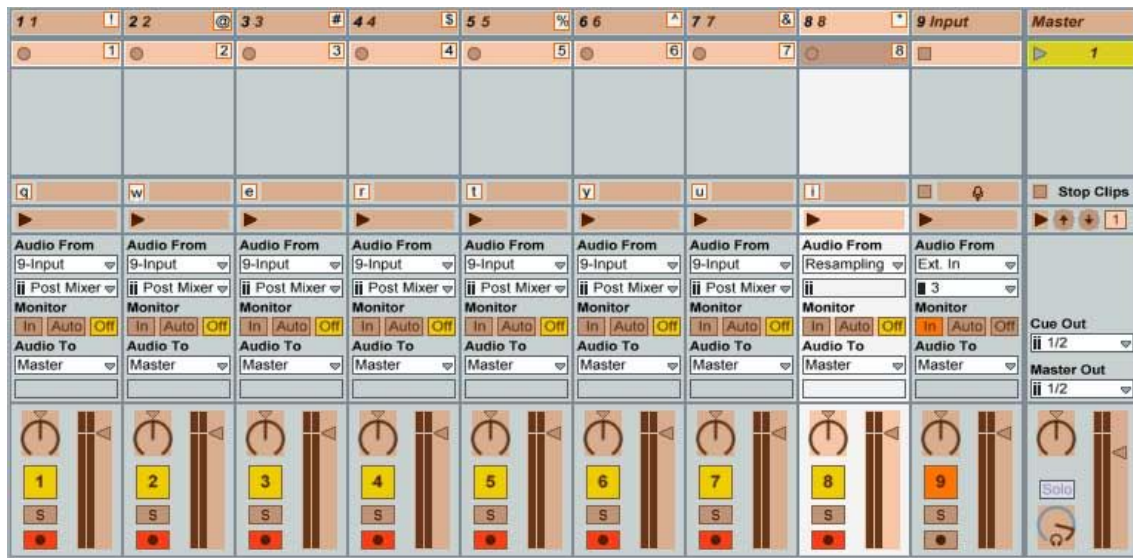
Choose 'resampling' as the input source, turn monitoring to 'off' and arm for recording.

Track 9:

Choose your external audio source as input, set monitoring to 'in'.

Finally, set up the keyboard assignments as follows, placing the number keys into the top row of cells on tracks 1-8 and the top row of letters q-i into the 'stop' buttons on the first 8 clips and SHIFT+1 through 8 into the channel selection cell.

Bome's Midi Translator: Tutorial: MT Pro with Ableton 3 The Ableton Setup



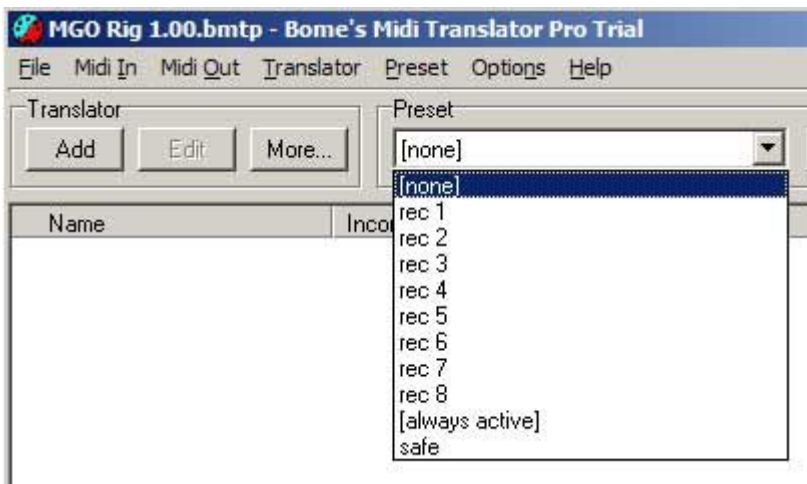
Now save that template. You can play with it just using the number keys if you like, the basic functionality is all there and even on it's own, this template can be useful. For troubleshooting purposes , I recommend turning off all Midi input at this point until you have everything running.

4 Bome's MIDI Translator Pro/Author (MTPro)

4.1 Preparation & Theory

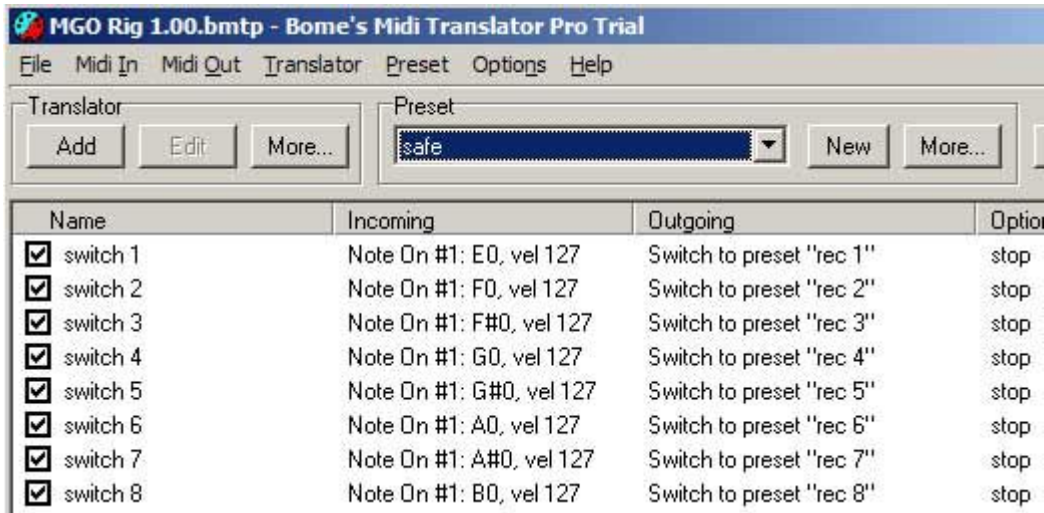
Set the Midi In to come from your Midi device.

We are going to set up several MTPro presets, and switch between them. The basic theory is that when recording on channel x, we need to add an extra keystroke to turn that channel off when we're done. There are 4 distinct types of preset, one of which will be copied & amended 7 times for tracks 1-7.



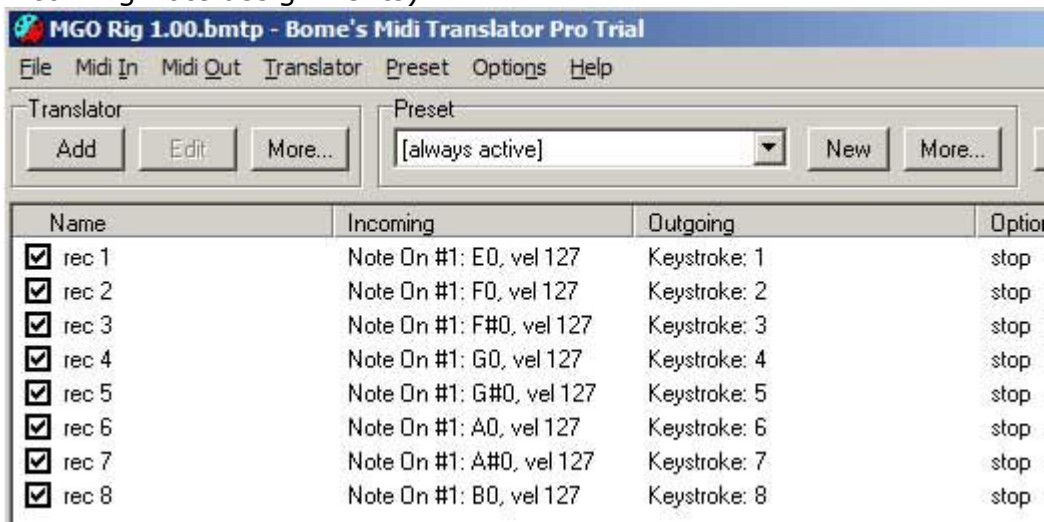
4.2 Preset [Safe]

This is the preset we need to select before we start recording in Ableton. It simply captures your 8 incoming Midi notes and changes preset accordingly.



4.3 Preset [Always Active]

Now go to Preset/Edit "Always Active" Preset and add these translators (remember, you can cut & paste these from preset [safe] to copy those incoming note assignments).

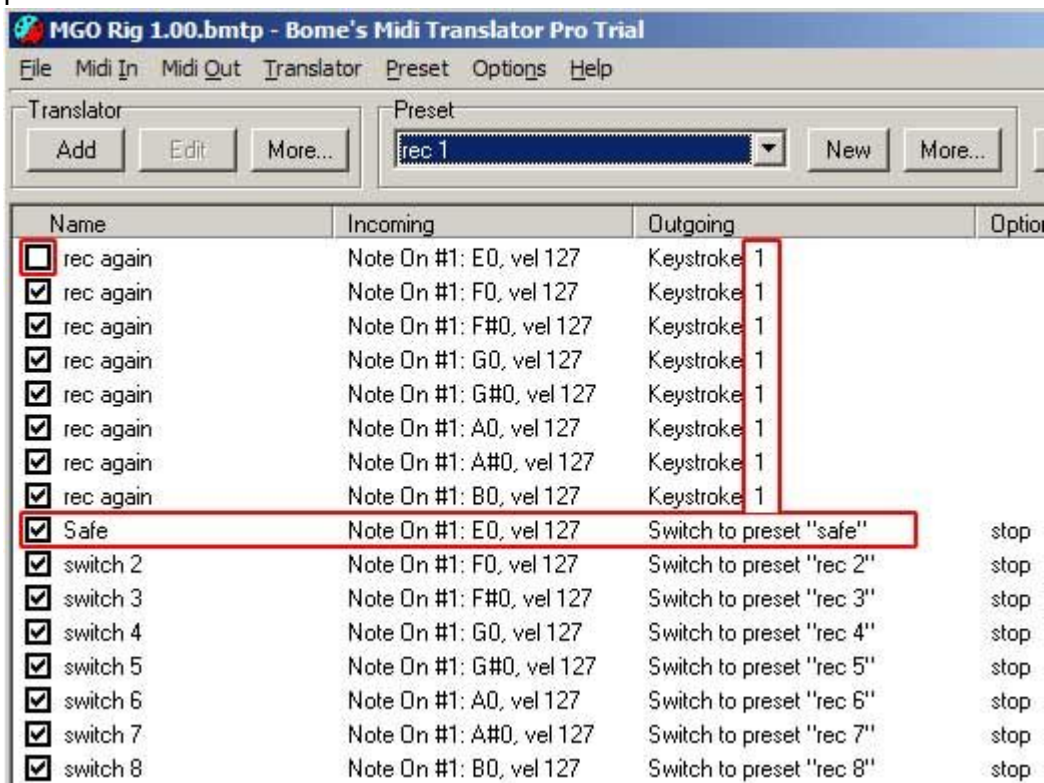


With Preset [safe] selected, when we press 1-8, two things will happen. The keypress '1-8' will be sent through to ableton, starting recording on that channel, and MTPro will flip to a new preset:

4.4 Preset [rec 1]

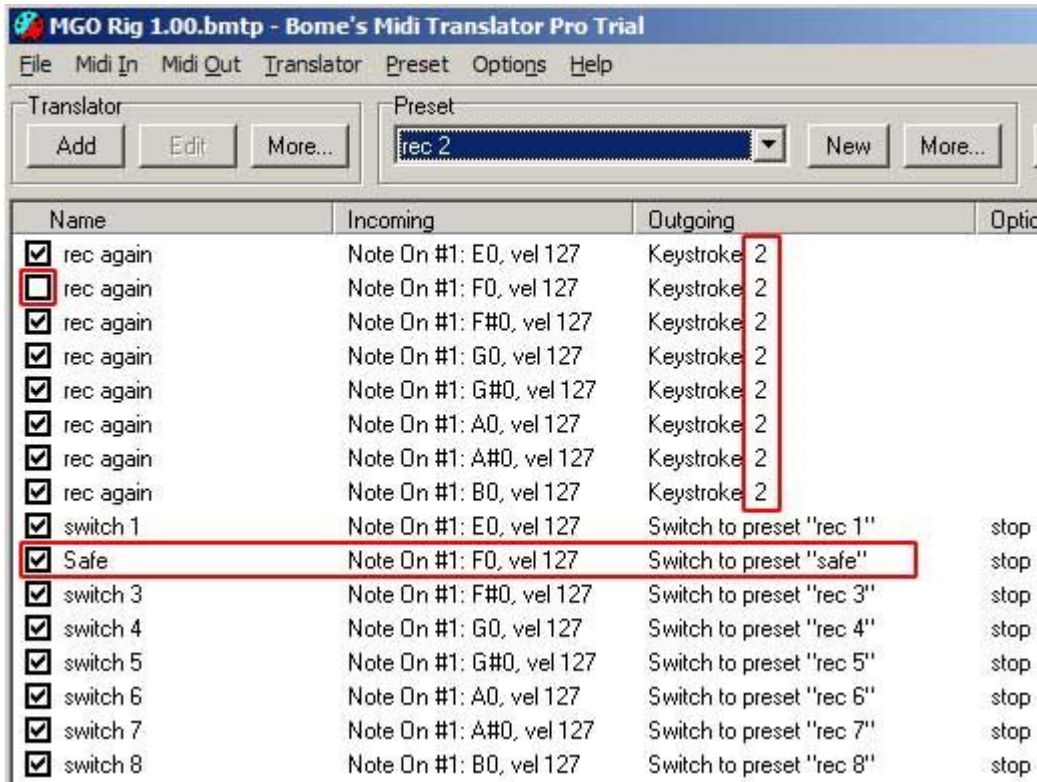
Here's the active preset for recording on channel 1. The first bank of 8 translators add an additional keystroke of '1' to stop recording on this channel – note that this translator is turned off for channel 1.

The second bank of translators deals with preset switching. In all cases apart from the first this can be copied & pasted from [safe], but notice that preset 1 switches back to safe.



4.5 Presets [rec 2] – [rec 7]

These are variants on the above. You can copy and paste [rec 1] and simply change the following 3 properties:



Make sure that the translator 'rec again' is turned off for the channel you are currently editing.

Change the keystroke to match.

Only switch to [safe] on the channel you are editing.

If you examine the red highlighted areas from the two graphics it should be fairly obvious how the rest pan out.

4.6 [rec 8]

This final channel is used for resampling. I have split the final timer-triggered key command into several parts for ease of reading, but it could be done with a single translator.

Name	Incoming	Outgoing	Option
<input checked="" type="checkbox"/> Stops	Note On #1: E0, vel 127	Keystroke: Q W E R T Y U	
<input checked="" type="checkbox"/> Stops	Note On #1: F0, vel 127	Keystroke: Q W E R T Y U	
<input checked="" type="checkbox"/> Stops	Note On #1: F#0, vel 127	Keystroke: Q W E R T Y U	
<input checked="" type="checkbox"/> Stops	Note On #1: G0, vel 127	Keystroke: Q W E R T Y U	
<input checked="" type="checkbox"/> Stops	Note On #1: G#0, vel 127	Keystroke: Q W E R T Y U	
<input checked="" type="checkbox"/> Stops	Note On #1: A0, vel 127	Keystroke: Q W E R T Y U	
<input checked="" type="checkbox"/> Stops	Note On #1: A#0, vel 127	Keystroke: Q W E R T Y U	
<input checked="" type="checkbox"/> Stops	Note On #1: B0, vel 127	Keystroke: Q W E R T Y U	
<input checked="" type="checkbox"/> Delay insert/clearout	Note On #1: E0, vel 127	One-shot timer "mixdown": 3s:5ms delay	
<input checked="" type="checkbox"/> Delay insert/clearout	Note On #1: F0, vel 127	One-shot timer "mixdown": 3s:5ms delay	
<input checked="" type="checkbox"/> Delay insert/clearout	Note On #1: F#0, vel 127	One-shot timer "mixdown": 3s:5ms delay	
<input checked="" type="checkbox"/> Delay insert/clearout	Note On #1: G0, vel 127	One-shot timer "mixdown": 3s:5ms delay	
<input checked="" type="checkbox"/> Delay insert/clearout	Note On #1: G#0, vel 127	One-shot timer "mixdown": 3s:5ms delay	
<input checked="" type="checkbox"/> Delay insert/clearout	Note On #1: A0, vel 127	One-shot timer "mixdown": 3s:5ms delay	
<input checked="" type="checkbox"/> Delay insert/clearout	Note On #1: A#0, vel 127	One-shot timer "mixdown": 3s:5ms delay	
<input checked="" type="checkbox"/> Delay insert/clearout	Note On #1: B0, vel 127	One-shot timer "mixdown": 3s:5ms delay	
<input checked="" type="checkbox"/> Cleardown	On timer "mixdown"	Keystroke: Ctrl(Shift[])	
<input checked="" type="checkbox"/> Select Channel	On timer "mixdown"	Keystroke: Shift(1)	
<input checked="" type="checkbox"/> Cut&Paste	On timer "mixdown"	Keystroke: Up Ctrl(X)Down Ctrl(V)	
<input checked="" type="checkbox"/> Select Channel	On timer "mixdown"	Keystroke: Shift(2)	
<input checked="" type="checkbox"/> Cut&Paste	On timer "mixdown"	Keystroke: Up Ctrl(X)Down Ctrl(V)	
<input checked="" type="checkbox"/> Select Channel	On timer "mixdown"	Keystroke: Shift(3)	
<input checked="" type="checkbox"/> Cut&Paste	On timer "mixdown"	Keystroke: Up Ctrl(X)Down Ctrl(V)	
<input checked="" type="checkbox"/> Select Channel	On timer "mixdown"	Keystroke: Shift(4)	
<input checked="" type="checkbox"/> Cut&Paste	On timer "mixdown"	Keystroke: Up Ctrl(X)Down Ctrl(V)	
<input checked="" type="checkbox"/> Select Channel	On timer "mixdown"	Keystroke: Shift(5)	
<input checked="" type="checkbox"/> Cut&Paste	On timer "mixdown"	Keystroke: Up Ctrl(X)Down Ctrl(V)	
<input checked="" type="checkbox"/> Select Channel	On timer "mixdown"	Keystroke: Shift(6)	
<input checked="" type="checkbox"/> Select Channel	On timer "mixdown"	Keystroke: Shift(7)	
<input checked="" type="checkbox"/> Cut&Paste	On timer "mixdown"	Keystroke: Up Ctrl(X)Down Ctrl(V)	
<input checked="" type="checkbox"/> Select Channel	On timer "mixdown"	Keystroke: Shift(8)	
<input checked="" type="checkbox"/> Clear Slot 8	On timer "mixdown"	Keystroke: Up Delete	
<input checked="" type="checkbox"/> Safe	On timer "mixdown"	Switch to preset "safe"	stop

The first bank of translators tells clips 1-7 to stop playing at the end of the bar.

The second bank will start a timer called mixdown. This needs to last longer than 1 bar at the tempo you are recording at – my choice of 3.5 seconds allows me to safely record as low as 75 bpm. Any lower and there's a small

[possibility my cleanup could be triggered before the end of the bar. If you plan on recording slower than this you may need to increase this delay time, or you may wish to speed it up for better response.

The final sequence of commands are triggered from the timer in top- down order. It starts by capturing and inserting the current scene (CTRL+SHFT+I), selects the next track (SHFT+1-7) then copies and pastes the now stopped clips 1-7 into the new slots created for them (Up CTRL+X Down CTRL+V), deletes a stray on 8(Up Del), leaves the resample playing on track 8 and finally shifts back to [safe].

5 In Use

We should be ready to go. Fire up MTPro, select the [safe] preset.

Fire up Ableton and load the scene we created earlier.

Hit play.

From now on, all your recording is managed through the 8 buttons/keys we've assigned. Hit 1 and start recording, hit it again when you're finished (before the end of the last bar), or hit another channel to immediately start recording on that channel instead. If you want to resample that to a single loop, hit button eight to start resampling and any button again to stop, thus allowing you to easily set any loop size for your resampled loop.

That's it. Couldn't be simpler in operation.

6 Project Files

The project file of this tutorial is installed with Midi Translator in the *My Documents\Bome's Midi Translator\Presets* folder under the name "Ableton Live MGO Rig 1.00". Also included is a .als file to set up Ableton.

7 Contact

I hope this tutorial has been of help. If anyone can think of ways to streamline this, make it better, or just abuse it in cool ways, let me know! Please send any feedback to chelfyn@gmail.com.
Cheers.